

# MEREDITH PARKS & RECREATION DEPARTMENT



## 15 Year Master Plan

*November 1, 2017*

## 15 Year Master Plan



The purpose of the 15 year master plan is to evaluate existing Parks and Recreation facilities, programs, operations, and the resources available to deliver services. The master plan utilizes input from the general public, user groups, students, town departments, school district, stake holders, and various regulatory agencies to make recommendations for meeting the recreational needs of our community over the next 15 years. It will serve to guide all aspects of future development and growth for the Parks and Recreation Department.

Respectfully Submitted,

Vint M. Choiniere, CPRP

Meredith Parks and Recreation Director

# Acknowledgements

## **Meredith Selectboard Members**

Bev Lapham  
Jonathan James  
Michael Pelczar  
Nate Torr  
Ray Moritz

## **Town Manager**

Phillip L. Warren, Jr.

## **Contributors**

Angela LaBrecque, Meredith Town Planner  
Beth Hamblett, Inter-Lakes Youth Soccer  
Bob Barcelona, Ph.D. Department Chair, UNH Dept. of Recreation Management & Policy  
Bob Giroux, Lakes Region Flag Football  
Carl Johnson, Jr., Advanced Land Surveying Consultants  
Chuck Buhrman, Lakes Region Youth Lacrosse  
Darlene Forst, New Hampshire Department of Environmental Services  
Donna Keuthe, Moultonborough Recreation Director  
Greenplay, LLC  
Harold Wyatt, Meredith Historian  
James Commerford, Meredith Assessor  
Jeff Cloos, Inter-Lakes High School Athletic Director  
Jen Wrath, Inter-Lakes Elementary School Principal  
John Edgar, Meredith Community Development Director  
Julie Choiniere, Volunteer Master Plan and Survey Typing, Data Entry, and Layout  
Kathryn Spatz, Parks & Recreation Director, Town of Davidson, NC  
Kevin Dunleavy, Laconia Parks and Recreation Director  
Kim Durand, Inter-Lakes Youth Softball  
Lakes Region Planning Commission  
Mary Moriarty, Inter-Lakes School District Superintendent  
Nancy Bickford, Cal Ripken Youth Baseball  
Patti Murphy, Inter-Lakes High School Principal  
Robert Kelly Turpin, Misiaszek & Turpin, LLC  
Robert Valliere, Prescott Park Historical Review  
Sonya Misiaszek, Misiaszek & Turpin, LLC

## Mission Statement

2007

The main goal of the Meredith Parks and Recreation Department is to provide recreational and leisure activities for the community at large, and for people of all ages and abilities. This is accomplished by working with the schools, commercial establishments, and community volunteers to create organized programs and self-guided recreational opportunities.



*Children Enrolled in the After School Program Made a Quilt with the Seniors*

## 15 Year Master Plan Goals

1. Determine future Facility, Programming, Technology, and Funding needs for the next 15 years for the Meredith Parks and Recreation Department.
2. To make prioritized recommendations based on factual research and meaningful input from Meredith residents, known user groups, and community stakeholders.
3. To document existing conditions of all facilities, programs, and the service delivery system.
4. To research alternative funding sources, which would enable us to meet the future recreational needs of our community, and at the same time lessen the burden on the tax payers of Meredith.
5. To be sure those recommendations for future facility and program development meet the needs of people of all age groups, and are accessible to people of all abilities, and are environmentally responsible.



**Meredith Parks and Recreation Department  
15 Year Master Plan Outline  
November 1, 2017**

## **Table of Contents**

ACKNOWLEDGMENTS.....	2
MISSION STATEMENT.....	3
15 YEAR MASTER PLAN GOALS.....	4
I. INTRODUCTION .....	6
a. Benefits of Parks and Recreation Systems.....	7
II. SOCIAL AND ECONOMIC ANALYSIS.....	9
III. INVENTORY AND ANALYSIS OF EXISTING FACILITY CONDITIONS..	13
a. Lower Prescott Park.....	13
b. Upper Prescott Park.....	32
c. Community Center .....	44
d. Circle Drive Park.....	57
e. Childs Park.....	57
f. Waukegan Highlands Community Park.....	60
g. Leavitt Beach.....	62
h. Waukegan Beach.....	66
i. Swasey Park.....	68
IV. INVENTORY OF EXISTING MAINTENANCE EQUIPMENT.....	71
a. Vehicle and Equipment Inventory.....	71
b. Condition of Existing Maintenance Equipment & Vehicles.....	71
c. Projected Maintenance Equipment Needs .....	72
V. MAINTENANCE AND PROGRAMMING STAFF & DELIVERY SYSTEM..	73
a. Parks and Recreation Maintenance Responsibilities.....	74
b. Routine tasks that are completed at each facility.....	74
c. Maintenance Staffing Review.....	76
d. Review and Evaluation of Existing Programs.....	77
e. Review of Existing Program Staff.....	79
f. General Department Recommendations.....	83
g. Public Input.....	84
h. Master Plan Recommendations Support Survey Requests.....	85
VI. SUMMARY OF RECOMMENDATIONS.....	86
VII. SURVEYS	
a. Town-Wide Community Survey Summary.....	88
b. Inter-Lakes School District Student Survey Summary.....	117
VIII. APPROVAL AND ADOPTION OF MASTER PLAN.....	120
IX. MONITORING THE MASTER PLAN.....	121

## Introduction

The Meredith Parks and Recreation Department offers a variety of programs and activities year round to people of all ages and abilities. The department strives to set program registration fees at a rate that will recover the cost of offering the program while at the same time making the program affordable. Although this can be very challenging, the department attempts to accomplish this goal by partnering with local civic groups, soliciting donations of time, talent, services, and monetary contributions to supplement the annual operating budget to help make program registration fees as affordable as possible. Programs are open to non-residents at a slightly higher registration fee.

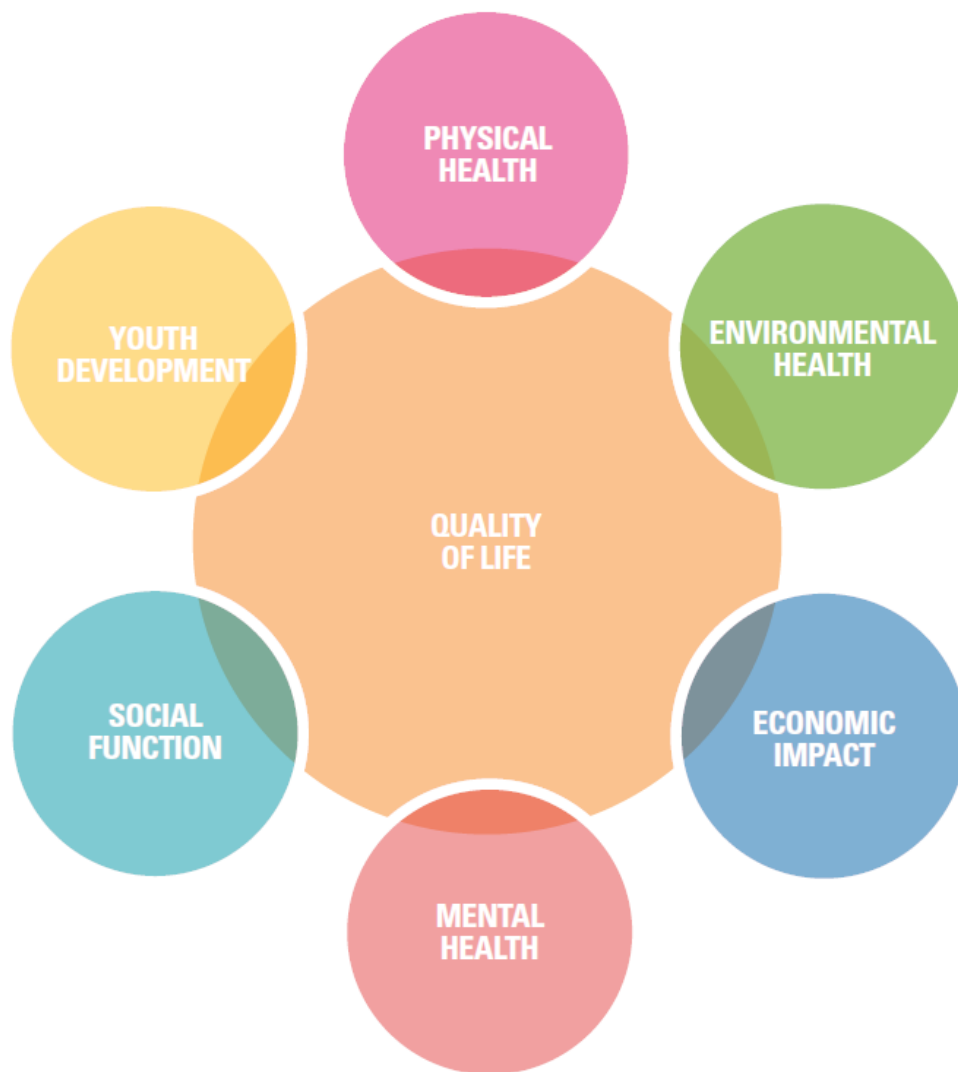


*Charlie Chatteron Shares His Hand Made Toys With After School Program Participants*

## Benefits of Parks and Recreation Systems

As illustrated in the following graphic, the National Recreation and Parks Association's *Synopsis of 2010 Research Papers* summarizes the key categories to which parks and recreation contribute to building healthy and vibrant communities.

*The chart below and information on the following page is reprinted with permission from the Town of Davidson, NC, Parks and Recreation Department.*



### **Physical Health**

Parks and recreation facilities play a key role in the physical health of a community. Designated outdoor recreation space encourages physical activity and provides a connection to nature. Studies suggest that communities with a greater availability of parks, greenways and trails have residents with lower rates of chronic disease and obesity and longer life spans. (National Recreation and Park Association, *Synopsis of 2010 Research Papers: The Key Benefits*).

### **Mental Health**

Parks and recreation departments have an immense impact on residents' mental health. "Numerous studies demonstrate that access to green views and environments can improve cognitive functioning, impulse control, resilience to stressful life events, and overall mental health. Conversely, studies report a link between low nature access with increases in attention deficit/hyperactivity disorder (ADHD), clinical depression, stress and anxiety." (National Recreation and Park Association, *Synopsis of 2010 Research Papers: The Key Benefits*).

### **Environmental Health**

Parks have often been described as the "lungs of the town." Parks contribute to air quality, reduce heat island effect and, when well-designed, serve as natural water and wastewater treatment facilities. In addition, well-connected parks and designated open space serve as wildlife corridors and promote contiguous natural flora habitat.

### **Social Function**

Parks provide community meeting space, a place for residents to come together regardless of class or race. Research suggests that access to parks and recreation facilities alleviates isolation in individuals, especially the elderly.

### **Youth Development**

Effective parks and recreation programming supports the development of life skills in adolescents. One study suggests that "students who participate in at least one hour of extracurricular activities per week are 49% less likely to use drugs and 37% less likely to become a teen parent." (National Recreation and Park Association, *Synopsis of 2010 Research Papers: The Key Benefits*).



### **Economic Impact**

The economic impact of parks can be measured in a variety of ways. Researchers indicate that parks are one of the most cost-effective ways to lower long-term health care expenditures, reduce costs associated with removing air pollutants from the air and generate greater tax revenues from properties near parks and designated open space. Parks can provide employment opportunities for groups typically marginalized in the traditional workforce such as youth. Parks and open space serve as a catalyst for economic development by often increasing the value of nearby properties, increasing property tax revenue and attracting businesses and trained employees in search of a high quality of life.

# Social and Economic Analysis

Meredith, NH

According to 2014 American Community Survey

Population Totals & Projections							
Year	2000	2010	2015	2020	2025	2030	2035
Population	5,943	6,241	6,291	6,371	6,457	6,561	6,664
Estimated Seasonal Population Influx 13,000							

Population by Age	
Under Age 5	272
Age 5- 19	1,233
Age 20-34	689
Age 35-54	1,699
Age 55-64	845
Age 65 & Over	1,565
Median Age	48.7

Population by Gender	
Male	3,168
Female	3,135

Education Attainment Population and Over	
High School Graduate or Higher	92.60%
Bachelor's Degree or Higher	35%

Annual Income	
Per Capita Income	\$36,703
Median Family Income	\$75,060
Median Household Income	\$56,625
<i>Median Earnings, full-time, year round workers</i>	
Male	\$55,353
Female	\$41,614
Individuals Below the Poverty Level	8.20%
Unemployment Rate	4.10%

<b>Housing</b>	
Single Family Units	4,059
Multiple Family Structures	
2-4 Units in Structure	275
5 or More Units in Structure	289
Mobile Homes & Other Housing	200
Total Housing Units	4,823

<b>Education</b>			
Schools	Elementary	Middle	High
# of Schools	1	1	1
Grade Levels	PK-4	5 - 8	9 - 12
Enrollment	330	334	332

<b>2015 Licensed Child Care Facilities</b>	
Total Facilities	3
Total Capacity	173

<b>Transportation</b>	
U.S. Routes	3
State Routes	104, 132, 25
Nearest Interstate Exit	I-93, Exit 23 Distance 9 Miles
Public Transportation	None
Nearest Airport With Scheduled Service Manchester-Boston	56 Miles

<b>Percent of Working Residents</b>	
Working in community of residence	42.70%
Commuting to another NH community	55.10%
Commuting out-of-state	2.20%

<b>Commuting to Work - Workers 16 and Older</b>	
Drive alone, private vehicle	88.90%
Carpool	3.30%
Walked	0.90%
Other means	0.60%
Worked at Home	5.90%
Mean Travel Time To Work	22.5 Minutes

Ethnicity - 2010 U.S. Census							
White	Black or African American	American Indian and Alaska Native	Asian	Native Hawaiian and Other Pacific Islander	Some Other Race	Two or More Races	Hispanic or Latino (of any race)
6,073	18	11	58	0	16	65	66

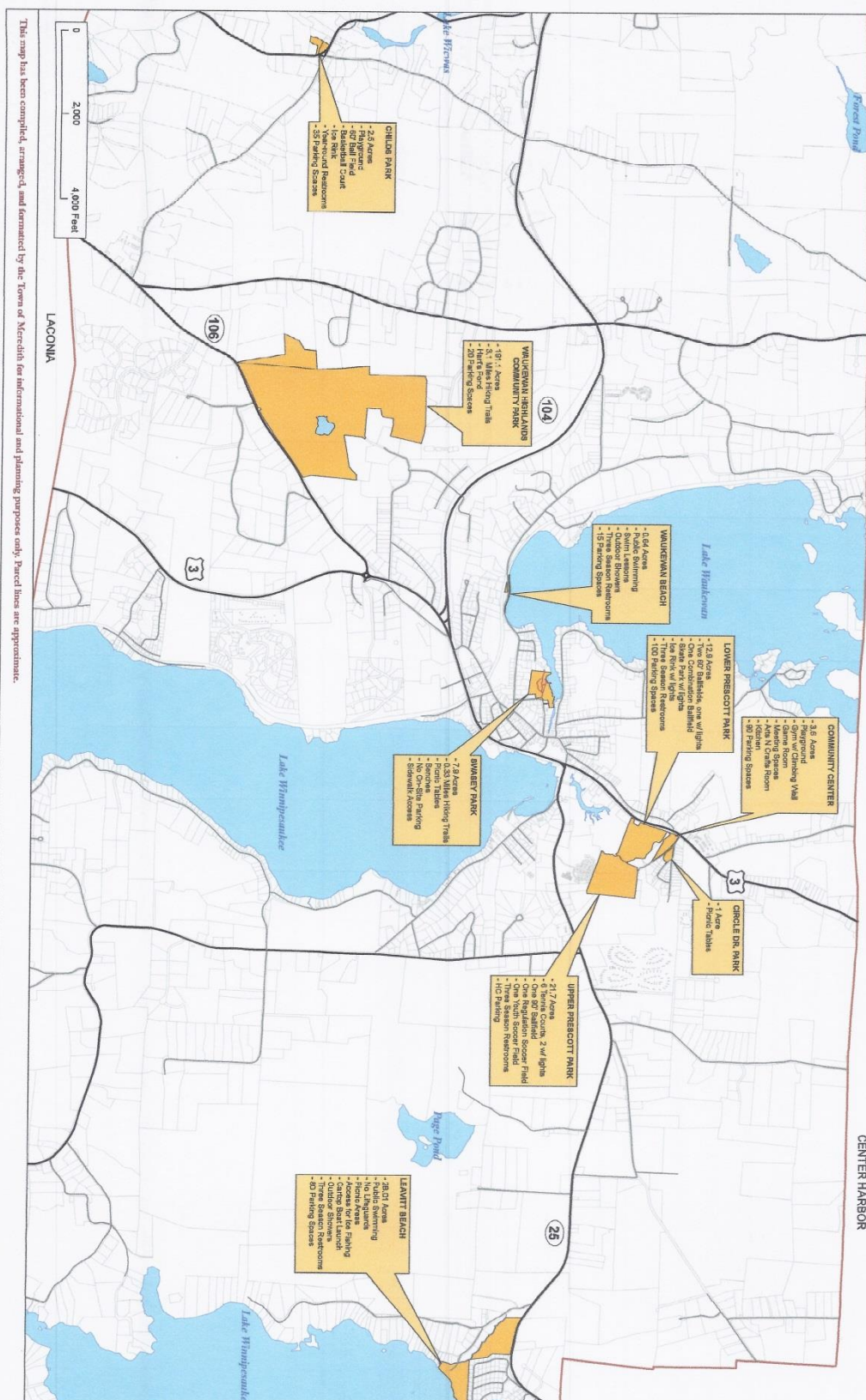
Individuals - With a Disability	
0 to 17 years	129
18 to 34 years	148
35 to 64 years	264
65 to 74 years	156
75 years and over	286



*Senior Strength & Balance Class*

**Town of Meredith, NH  
PARKS AND RECREATION DEPARTMENT FACILITIES**

CENTER HARBOR



## **Inventory and Analysis of Existing Facility Conditions**

### **NEW HAMPSHIRE DEPARTMENT OF ENVIRONMENTAL SERVICES (NHDES) SITE INSPECTION**

Parks and Recreation Director Vint Choiniere met with NHDES Shoreland Section Supervisor Darlene Forst on September 14, 2016 to inspect each of the facilities that would be impacted by the recommended improvements outlined in this Master Plan. None of the recommended improvements were met with any particular concern by Ms. Forst. She highly recommended that the Town of Meredith submit an informal conceptual plan for each facility to the NHDES, prior to submitting a request for permit. During the site inspection, Ms. Forst recommended that any improvements to Upper and Lower Prescott Park requiring a NHDES permit be included on the same permit application. The site inspections were very positive and encouraging, as no major roadblocks were identified by Ms. Forst.

### **LOWER PRESCOTT PARK - 13 Acres**

367 D.W. Highway

#### **History**

Prescott Lumber Company owner Frank Prescott donated land for the purpose of encouraging athletics and sports to the Town of Meredith in 1922. The Meredith High School baseball team played their first game at Prescott Park on May 5, 1928. Two tennis courts were added in 1940. Construction of Rt. 3 began in 1948 which had a major impact on Lower Prescott Park. A little league baseball field was constructed in 1956 located at the current Field 1 location. Lower Prescott Park was the site of the Town Dump until it was relocated to Jenness Hill Road in 1956. In 1965 a second youth ballfield was constructed, as well as a basketball court. In 1974 the ice skating rink was constructed and included lights. In 1979 a building once used as a blacksmith's shop was donated to the Town of Meredith, relocated to Lower Prescott Park and was dedicated to Ralph "Pa" Smith, a long time caretaker of the park. The concrete block restroom building was constructed in the mid 1980's and a wooden playground structure was added in 1989. Lower Prescott Park has been the site for the majority of recreational activity taking place in Meredith for nearly 100 years,

and it will continue to play a key role in providing recreational opportunities for the community well into the future.

**Features:**

- (1) 60' Diamond with skin infield with lights
  - (1) 60' Diamond with skin infield no lights
  - (1) Diamond with skin infield accommodates both 60' and 90' no Lights
  - (1) Batting cage
  - (2) Youth soccer fields no lights
  - (1) Ice skating rink with lights
  - (1) Basketball court with lights
  - (1) Skate park with lights
  - (1) Seasonal restroom building includes Town Water and Sewer Service, maintenance workshop, skate park service room, and equipment storage.
  - (1) Heated Storage Building
- Benches, Picnic Tables, Bleachers, Drinking Fountains
- Gravel parking lot -122 vehicle capacity

**Lower Prescott Park – User Groups**

Inter-Lakes High School

Varsity and JV Softball

Middle School Baseball & Softball

Middle School Boys & Girls Soccer

Youth League Baseball & Softball

Inter-Lakes Youth Soccer

Parks & Recreation Youth Soccer

Parks & Recreation Summer Camp

Parks & Recreation Summer Soccer Camp

Reach the Beach Road Race

Kennel Club Dog Show

### **Existing Conditions**

Lower Prescott Park sees heavy use from April 15 through November 1 by many different scheduled sports groups. In the winter months primary uses are ice skating and snowmobiling. Although the athletic field playing surfaces are in good condition the remaining elements of the park are 50 years old, or older in some cases, and are in need of repair or replacement. Much of the park drains poorly, especially Fields 1 and 3, which has a negative impact on the spring baseball and softball schedule for Inter-Lakes High School. These two fields were unplayable far later in the season than ever before in 2017. The fact that there are no sidewalks or designated walking paths, and a lack of parking at Upper Prescott Park, combine to create very unsafe conditions for foot and vehicle traffic.

### **Recommended Improvements**

**Long Term:** Design full renovation of Lower Prescott Park and construction of new parking lot and sidewalks at Upper Prescott Park.

**Cost Estimate:** \$35,500    **Projected Completion:** 2018

Given the age of the park elements and the magnitude of the issues caused by poor drainage and lack of parking at Upper Prescott Park it would be most efficient and cost effective to renovate Lower Prescott Park in one project. Although it would require a significant investment, in the long term it would be the most efficient method of making the much needed improvements. This option would also avoid the inefficiency of making improvements to individual elements of the park over the next 5 years, only to

effectively “lose” the improvements made if and when a full park renovation is needed in 12-15 years. If and when a full park renovation is made, commitment would be needed 2 years in advance, and the effort would need to be well coordinated between the Town of Meredith, SAU, and youth sports coordinators. During the construction phase many athletic programs would be displaced and a well-coordinated effort would be required to accommodate all the impacted programs. The Parks and Recreation Director, ILHS Athletic Director, and Youth Sports Coordinators all work very well together and each would play a key role in coordinating the effort. No matter what strategy is determined to sequence the scheduling of facility improvements, long term solutions to ever worsening conditions such as poor drainage, lack of parking, and unsafe pedestrian and vehicle traffic flow should be studied. These conditions will certainly worsen over time as demand for the park continues to increase. A full renovation of the park would include a thorough study of synthetic vs. natural playing surfaces, need for lighted facilities, skating rinks, indoor athletic space, etc. A careful review of annual maintenance costs would be included as well.

**Short Term:** Interior & Exterior Renovation of Restroom Building (Building #2)

**Cost Estimate:** \$ 11, 957      **Projected Completion:** 2017

The seasonal building is approximately 35 years old and is in poor condition. It houses a work shop for the Parks and Recreation Dept., seasonal restrooms, and storage for Inter-Lakes High School softball, youth league baseball and softball, and Parks and Recreation Dept. maintenance. The building requires a new roof, exterior trim, exterior paint, replacement of all toilets and sinks with commercial grade fixtures, lighting, and doors. All of these items are original to the building construction and are in need of replacement. The Parks and Recreation Dept. has partnered with the Meredith Rotary Club to complete this work, which is scheduled for 2017. The Rotary Club will provide professional labor and the Town of Meredith will provide the materials.

***“You can measure the health of a town by the vitality and energy of its streets and public open space.”***

**~ William H. Whyte**



*Lower Prescott Park Restroom Building Roof Replacement and Other Repairs Required*

### **Replenish & Grade Parking Lot & Service Road**

**Cost Estimate:** \$15,000      **Projected Completion:** 2017

In 2010 the gravel parking lot was dramatically improved, as the project included grading specifications and 2 grass treatment swales, which drain into the wetlands just south of the parking lot. Although the project improved the parking lot conditions, it left the Parks and Recreation Dept. with a maintenance challenge. The grading specifications which were included in the DES permit required a very slight elevation pitch of 1%. This causes water to pool and remain long after every rain event, making conditions difficult for visitors to navigate after parking. It is also challenging for maintenance staff to paint the parking lot lines with water constantly in the way. The gravel service road leading from Lower Prescott Park to Upper Prescott Park is in very poor condition and is in need of repair.

The service road was originally intended to be utilized only by those authorized such as handicapped individuals or people with mobility issues, maintenance staff and very limited use by user groups, program volunteers, and coaches. Because the service road was expected to see limited use, the existing service road at the time the Upper Prescott Park Project was

constructed in 2002 was not upgraded. From 2002 to 2006 the service road was gated, limiting the amount of traffic to authorized personnel and handicap access. However, in 2006 the NH Governor's Commission on Disability ruled that the gate was in violation of The Americans with Disability Act, and ordered the gate to remain open at all times. This dramatically increased the traffic flow to Upper Prescott Park, which caused the service road to fail. Since that time the Parks and Recreation Dept. has attempted to maintain the service road with assistance from Public Works, however because it was originally constructed with limited traffic expectations, it is always filled with pot holes and water pooling. The Parks and Recreation Dept. has partnered with the Public Works Dept. to properly build and shape the service road as well as replenish the gravel and regrade the parking lot. Work is scheduled to be completed in 2017.



*Lower Prescott Park Parking Lot - Ponding After Rain Events*

## **Resurface Basketball Court at Prescott Park**

**Cost Estimate:** \$9,000 per resurfacing

**Projected Completion:** 2017

Cracks are present in the court surface. Although the court is safe, cracks are now wide enough to worsen quickly. Recommendation is to repair the cracks with the Armor Repair System, the same process that has been used to successfully resurface the tennis courts in the past. The cost estimate includes coloring the surface and painting the court lines. The Armor System applies three layers of surface and a strong bonding material to repair the cracks. The contractor has estimated the repair will hold for 7 years. The repairs are scheduled for completion in 2017 and are funded within the 2017 operating budget. Industry standards recommend resurfacing asphalt surfaces every 5 years. Additional funding is included in the master plan budget.

## **Evaluate Skate Park Viability & Operational Procedures/Research Upgrade Cost**

### **History**

In 2000 and 2001, prior to building the skate park, the Parks and Recreation Dept. offered several bus trips to skate parks in New Hampshire, Vermont, and Maine. The trips were very popular and typically 30-40 students in grades 4-12 participated on each trip. The trips were organized by Parks & Recreation Director Vint Choiniere in response to the growth and popularity of the sport.



At that time it was commonplace to see many skate board and biking enthusiast skating and biking down the middle of Main Street, often times grinding on curbing, store fronts, park benches, or anything at all that they could enjoy as a challenging obstacle. Although they meant no harm this activity obviously threatened the safety of bikers and skaters, motorists, pedestrians, and it disrupted activity for business establishments as well.

During this time the Parks & Recreation Director thoroughly researched the possibility of building a skate park here in Meredith. Topics of his research included construction materials, hours of operation, policies and procedures, liability insurance, safety precautions, skate park special events such as competitions and lessons, and whether or not to supervise the skate park. Although elements constructed out of concrete or steel frames with skate lite riding surfaces were available at the time, they were cost prohibitive and the project had no start-up funding. Therefore it was determined that the elements would be constructed out of wood frames and steel riding surfaces. Although these materials do not have as long a life span they would be more affordable and more easily constructed by local contractors and volunteers. There was strong support from everyone involved to require the skate park to be supervised at all times, and this policy has been in place during the skate park's entire existence.

The Town of Meredith made the first contribution by paving over the old tennis courts no longer being used, allowing for that location to become the site of the new skate park. It was ideal in that it was fenced in and included lights. Initial fund raising provided enough materials to allow the construction of 5 elements, with the assistance of local contractors. The skate park opened in the fall of 2001 and it was immediately very successful with strong participation. A typical day would draw 35-50 participants. An attempt was made to supervise the skate park with volunteers. However, within a few weeks after opening the volunteers were unavailable to fulfill their original commitment. The Parks and Recreation Director stepped in and provided the supervision himself for the remainder of the fall season until the park closed for the season in late October. Given the popularity of the skate park and the strong desire by parents, the Parks and Recreation Director, and the Board of Selectmen to maintain supervision at the skate park, funding was included in the 2002 Parks and Recreation Department operating budget to supervise the skate park with paid staff. Thanks to funding provided by the Glenn Hart Fund, William Andrews, The Town of

Meredith, and many others who donated time, services, materials, and funding, several additional elements were added in 2002-2004. On August 2, 2003 the skate park was dedicated to Glenn Hart, and named the Glenn Hart Memorial Skate Park in his memory.

### **Skate Park Attendance Declines & Hours of Operation Are Reduced**

From 2001-2008 attendance at the skate park remained strong, averaging 35-50 participants per day. The skate park was open from 3:00-8:00 on school days and 12:00-8:00 on non-school days, including weekends. Special events were offered and coordinated by the Parks and Recreation Dept. such as skate boarding lessons and competitions. From 2008-2012 attendance began to decline, with the skate park drawing an average daily attendance of 12-15 participants, and special events were no longer viable.

The Parks and Recreation Department received substantial budget cuts in 2010 and 2012, and the budget was level funded in the years following the reductions. Funding was cut for many long standing services and programs. For example lifeguards were eliminated at both beaches, a loss of staffing was experienced in maintenance, summer camp, and the after school program. Funding for programs such as the Concert Series, Easter Egg Hunt, and Family Movie Night was eliminated. Programs that did not generate revenue or were experiencing low participation were the first to be eliminated or see a reduction. The skate park operated free of charge to participants and due to declining participation and budget reductions, the hours of operation were reduced to Fridays, Saturdays, and Sundays beginning in 2013. The skate park operated 3 days per week from 2013-2015 and participation continued to decline during those years. In 2016 the skate park hours were further reduced to Saturday and Sunday. The average daily attendance in recent years has been as follows: 2015 (7.3), 2016 (7.7), and 2017 (6.2).

### **Frequently Asked Questions Regarding the Future of the Skate Park**

**Q.** Does the Town of Meredith have funding available to replace the aging wooden elements and replace the cracking pavement?

**A.** The Town of Meredith does not currently have funding earmarked for the replacement of the elements and/or pavement. The Parks and Recreation Dept. has maintained the structural integrity of the elements and painted the riding surfaces each year. The original

wooden elements, which are still in use, represent approximately 50% of the elements and have little useful life remaining. The cracks in the pavement are filled each year, however this only has served to slow the rate of cracking and many are in need of repairs by a professional contractor. Brendan Hart, Glenn Hart's son, has been discussing the possibility of making upgrades to the skate park with Parks and Recreation Director Vint Choiniere during the past year. Brendan recently launched a Go Fund Me campaign to benefit the skate park.

**Q.** Would the Town of Meredith consider supervising the skate park with volunteers?

**A.** Town Manager Phil Warren has indicated that he would not support volunteer supervision due to liability and the fact that the position requires the volunteer to enforce compliance of policies. Early attempts to supervise the skate park with volunteers failed, and it is unrealistic to expect volunteers to stay committed to an operation schedule of 7 days per week for 7 months, as was originally the case. Even a schedule of fewer hours would be difficult to maintain with volunteers, as even the most well intentioned volunteers have busy lives that are filled with higher priorities.



**Q.** Would the Town of Meredith consider operating the skate park without supervision?

**A.** According to Town Manager Phil Warren, the Town of Meredith's Liability Insurance provider looks upon the skate park operation more favorably because it is supervised by paid staff.

**Q.** Would the Town of Meredith consider funding the expansion of hours at the skate park?

**A.** This question will be answered during the 2018 budget discussion, which will begin in October 2017. Although participation numbers have decreased over the past few years, advocates for the skate park feel that the decline in participation is related to the reduced hours and the inability of the Town of Meredith to replace the aging elements. Advocates feel that that if the hours were expanded, and some new concrete elements were added, and if the aging asphalt was replaced with a new concrete skating surface, the improvements would generate a renewed interest and participation numbers would increase. The decision to expand the hours of operation with paid supervision is a decision to be made by the Board of Selectmen after careful review of all the circumstances.

**Q.** What would it cost to expand the skate park hours to 7 days per week?

**A.** The additional cost to staff the skate park from 3:00PM-8:00PM on school days and from 12:00PM-8PM on non-school days from April 15-October 31 would be \$ 13,625.

### **Recommendations**

**Obtain Repair Cost Estimates:** TBD      **Projected Completion:** September 2017

If given direction by the Town Manager and Board of Selectmen to do so at the Master Plan discussion scheduled on July 17, 2017 the Parks and Recreation Director will research cost estimates to purchase new concrete elements and to replace the aging pavement with a concrete riding surface. Approximately 50% of the wooden elements are in good condition and have useful life remaining. Removing and replacing the pavement with concrete would require a substantial commitment, both in funding and logistically. All elements would need to be moved out of the skate park in order to remove the asphalt and pour the new concrete slab. Many of the elements are too large and heavy to move without being damaged. Given that the majority of the larger elements are located on one half of the skate park, one option

might be to replace the pavement on the other half of the skate park with concrete, and repair the remaining pavement with a contracted service. This would allow new concrete elements to be placed on the concrete section of the newly aligned area, along with wooden elements still in good condition. Fortunately most of the larger elements are among those that are newer, were constructed by a professional skate park builder, and they are among the most popular by participants.

In order for the skate park to be viable and regain the important role it once played, a community wide effort will be necessary. Under any scenario the effort will certainly require a cooperate effort between public and private agencies, something the Parks and Recreation Department has been successful with many times in the past.

### **Replace Backstop and Fencing at Field #2**

**Cost Estimate:** \$ 20,000      **Projected Completion:** 2018

The backstop and fencing at Field #2 is in very poor condition and is in need of replacement. Repairs have been made however the backstop is now leaning heavily. Footings are visible and are beyond repair.



*Lower Prescott Park  
Field #2 ~ Fencing and Backstop in need of replacement*

## Evaluate “Pa Smith” Building

**Cost Estimate:** TBD

**Projected Completion:** 2018

The “Pa Smith” building, up until the opening of the Community Center in 2006, served as a program building for the Parks and Recreation Dept. Since 2006 it has been utilized as storage for both maintenance and seasonal program equipment. Several years ago the Meredith Code Enforcement Officer expressed concern over the safety of the building given its’ age and condition, and recommended using only the first floor for storage. He recommended utilizing the second floor very sparingly. The building has working electric heat, but is never heated. The building sits on cinder blocks and has shifted over the years. The building should be evaluated thoroughly by a qualified professional to determine whether or not it is safe to use. Given that the building once served as a blacksmith shop, and was donated to the Town of Meredith, it should also be evaluated by an architectural historian to see if it has value in this regard. Once the research has been completed a determination can then be made as to the best course of action to take regarding the building.



*“Pa Smith” Building*

### **Repair Field #3 Batting Cage**

**Cost Estimate:** \$2,000

**Projected Completion:** 2018

The Field #3 batting cage was installed in 1994. Repairs have been made over the years however the stability of the posts have been compromised and some of the fencing fabric has failed due to the pounding of the balls against it during batting practice. The posts require corner braces to stabilize them and the fabric is in need of replacement.



*Batting Cage Field #3*

### **Ice Skating Rink: Improve the ability to make, maintain, and preserve a quality ice skating surface**

**Cost Estimate:** TBD

**Projected Completion:** TBD

Because the skating rink is exposed to the elements and the ability to maintain quality ice is dependent on the weather and temperatures, it is a challenge to provide quality skating

conditions on a consistent basis. The rink has a gravel bed and is enclosed by a gravel berm along the perimeter. Hawkins Brook serves as the source of water for flooding. The recommendation is to obtain cost estimates to add features such as a warming hut and heat to the existing restroom to make the rink more user friendly. To provide the best possible skating surface it is recommended that a hard surface be added to the rink to provide a level and consistent surface on which to make ice. It is also recommend that a hot water source be added to allow for a quality finish coat when flooding. Hot water would also allow the use of a mini Zamboni to be utilized to prepare quality ice conditions. The hot water source would also serve the restroom if one could be added. A public address system would allow music to be played during special events, family skating nights, and would also allow coordinators of events to make announcements. Providing a roof over the rink would be a tremendous asset to keep the elements off the ice surface. The rink could serve many purposes during the warm weather months as well. Given that the current rink location has lights it has great potential to be a popular recreation area. Many students who responded to the Master Plan survey indicated that they would enjoy more skating opportunities.

It may also be possible to relocate the skating rink to the basketball court or tennis courts given that both have a hard surface and lights. All of these options should be researched so that best option can be developed to improve the skating opportunities to the community.

*Leave all the afternoon for exercise and recreation, which are as necessary as reading. I will rather say more necessary because health is worth more than learning.”*

*~Thomas Jefferson*



*Prescott Park Ice Skating Rink*



*Prescott Park Ice Skating Party*



*Field #1*



*Soccer Field A*



*Field #2*



*Soccer Field B*

## Install New Play Experience Area

**Cost Estimate:** \$85,000

**Projected Completion:** TBD

The wooden playground structure installed in 1989 was demolished and removed in the fall of 2016. The slide was cracked in several places, swing bearings were failing, and replacement parts were unavailable for the structure. A new play space in the same location would serve many different programs such as the Summer Camp Program and After School Program. A new creative play experience in that location would also serve the many families who attend sporting events at the park, as siblings of the game participants would enjoy the playground while the game is being played. An effort would be made to provide a play experience that is unique and not a duplication of any other existing playgrounds in the community.



*Site of Future Play Experience Area*

### **Purchase Above Ground Irrigation Rain Cannon**

**Cost Estimate:** \$9,000

**Projected Completion:** 2018

The athletic fields do not have an automated underground irrigations system making them vulnerable to brown out conditions in July and early August. It is recommended that an above ground water cannon be purchased and incorporated into the turf management schedule. This would be a valuable addition to the maintenance team's resources. The existing well would serve as the source of water for the water cannon.



*Brownout due to lack of water*

### **UPPER PRESCOTT PARK - 21.74 Acres**

367 Daniel Webster Highway

#### **History**

The property where Upper Prescott Park is located was originally owned by the Inter-Lakes School District. An agreement was established between the Town of Meredith and the

school district in 1998, whereby the school district provided use of the site for recreation and the Town of Meredith agreed to develop, maintain, and manage the park. The Prescott Park Expansion Committee was formed to conduct a recreational needs analysis, design the park, and establish a shared usage philosophy of the park. It was determined that the park would be managed and scheduled by the Parks and Recreation Director. The park would be reserved for school district use on school days from 2:30PM-5:30PM. All other times would be shared between the Parks and Recreation Department, youth sports leagues, and the general community.

The shared use originally established by the committee has worked very well and remains in place today. A good working relationship between the Parks and Recreation Director, Inter-Lakes Athletic Director, and the various user group coordinators has allowed for scheduling flexibility. This has worked well for scheduling coordination especially when facing weather related re-scheduling of athletic events. The park opened and was dedicated on September 13, 2003. The New Hampshire Phantoms professional soccer team provided a youth soccer clinic which was followed by youth soccer games played by the Inter-Lakes Youth Soccer League.



*Prescott Park Opening Day and Dedication Ceremony - September 13, 2003*

## **Features**

- (1) 90' Baseball Diamond
  - (1) Batting Cage
  - (1) Triple Bull Pen
  - (1) Youth Soccer Field
  - (1) Regulation Soccer Field
  - (6) Tennis Courts (2 with lights)
  - (1) Restroom with Town Water and Sewer Service, Maintenance, Storage Building
  - (2) Walking trails connecting to the Inter-Lakes School District campus
- Irrigation System: All Fields are Equipped with Automated Irrigation
- Benches, Picnic Table, Bleachers, Drinking Fountains

## **Upper Prescott Park - User Groups**

Inter-Lakes High School  
Varsity & JV Baseball  
Varsity Boys & Girls Tennis  
Varsity & JV Boys & Girls Soccer  
Varsity & JV Boys & Girls Lacrosse  
Inter-Lakes Youth Soccer  
Youth Lacrosse  
Babe Ruth Baseball  
Legion Baseball  
Adult Baseball  
Adult Soccer  
Adult Tennis (60 members in the adult tennis club)  
Inter-Lakes Day Care – Tennis Lessons  
Parks and Recreation Tennis Lessons  
Walkers on Service Loop Road



### *Field #4 and Tennis Courts*

#### **Existing Conditions**

Upper Prescott Park is heavily used from April 1 to November 1 by all of the user groups listed above. All playing surfaces and the tennis courts are in very good condition. The park drainage plan was well designed and the playing surfaces are playable soon after rain events. The tennis courts have been resurfaced every 5 years and are in good condition.

As explained previously in the Lower Prescott Park section the original plan for Upper Prescott Park included only limited parking for authorized personnel and for people with handicaps and mobility issues. When parking was no longer restricted in 2006, a very unsafe conflict was created among vehicles and pedestrians, and the conflict continues today. The park lacks safe walking paths and adequate parking. Two existing battery operated scoreboards, which serve the baseball and soccer fields are obsolete. The baseball scoreboard is inoperable and replacement parts for repairs are unavailable. The walking paths connecting

the park to the Inter-Lakes School District campus are steep in some areas and the walking surfaces could be improved. The addition of lighting along the paths would add a great deal of safety and security.

### **Recommended Improvements - Design Parking Lot and Sidewalks**

**Cost Estimate:** Included in Lower Prescott Park Design      **Projected Completion:** 2018

Contract with a professional design firm to design additional parking and safe traffic flow for vehicles and pedestrians traveling to and from Upper Prescott Park. Scope of work should include updating of the storm water management plan, existing site data, and consultation with DES, a civil engineer, and landscape architect.

This recommendation is of the highest priority at the park, as it presents a dangerous risk every day from April 1 to November 1 from 2:30PM-Dusk. Once the gate at the entrance of the service road in Lower Prescott Park was opened on a permanent basis in 2006, the original layout of Upper Prescott Park was sure to fail. All of the fields and courts are scheduled to their capacity each and every day during the school year. On many occasions games and practices are scheduled on the fields at the same time. At these peak times the risk to pedestrians is severe. With the lack of any organized or formal parking area cars are parked on both sides of the service road, around the building blocking access to maintenance doors, and in grass areas.

The area is filled with blind spots as cars are constantly backing into traffic as pedestrians are walking in the same service road with very young children in hand while also pushing a stroller. Pedestrians are forced to walk in the same travel path as vehicles because there are no sidewalks or walking paths on which to walk. The greatest risk is created when cars block access gates to the fields and tennis courts, blocking access through the gates for emergency response vehicles responding to an injured athlete. The congested parking also prevents an emergency response vehicle from travelling freely up the service road in response to an emergency.

Eyewitness reports confirm that emergencies have occurred that required owners of parked cars that were blocking the access gate to be located, and asked to move their car, to allow the emergency vehicle access through the gate to attend to an injured athlete. Proper no

parking signage is posted on all gates and at the building. All parties involved such as the administrators of athletic programs, coaches, players, and visiting team bus drivers have all been asked to park in the parking lots located at Lower Prescott Park or the Inter-Lakes School District campus. The Police Department has been made aware of the situation. However, so few comply with the request and given that the situation has only worsened since 2006, it is imperative that a new parking lot and traffic flow is developed, to allow for vehicles and pedestrians to safely visit and enjoy the park.



*Blocking Emergency Access Gate*









### **Construct New Parking Lot, Sidewalks and Drainage.**

**Cost Estimate:** TBD

**Projected Completion:** 2019

Construct new parking lot, sidewalks and drainage as designed by the professional design firm.

### **Replace Baseball Scoreboard**

**Cost Estimate:** \$8,000

**Projected Completion:** 2018

The baseball scoreboard is battery operated, was installed in 2003, is no longer working, is obsolete and parts are no longer available for repairs. The scoreboard must be replaced with a new scoreboard powered by electricity. The cost estimate includes the installation of a new electrical source to power the new scoreboard.

### **Install lighting and improve conditions along the north and south trails**

**Cost Estimate:** \$50,000

**Projected Completion:** 2020

The north and south walking trails connect the park to the Inter-Lakes School District campus. In some locations the elevations are steep, especially on the north trail, making it challenging for some to navigate. It is also challenging to navigate the trails at dusk, especially after the conclusion of soccer practices and games in the fall. The trails are heavily used. It is recommended that a stairway be added to the north trail where the elevation rise is steep to ease the walk up the hill to the elementary school. It is also recommended that lighting be added to both trails for safety and security. The Inter-Lakes School District has supported the idea of making these improvements in early discussions with their maintenance administrator. This project would require, and undoubtedly receive from both parties, a cooperative effort between the Town of Meredith and the school district.



*Looking down the north trail connecting the  
Inter-Lakes School District campus to Upper Prescott Park*

**Install netting to protect tennis players from foul balls coming from adjacent baseball field**

**Cost Estimate:** \$15,000      **Projected Completion:** 2018

Foul balls hit from the baseball field into the tennis courts places the tennis players at risk of being struck by the foul balls. The risk is present nearly every day as baseball and tennis activity very often take place at the same time.

**Replace lighting at the tennis courts with LED lighting**

**Cost Estimate:** \$15,000      **Projected Completion:** 2027

This recommendation is meant to recognize that although the existing lights are in good working order, they will require an upgrade at some point.

## **Tennis Court Resurfacing**

**Cost Estimate:** \$11,500      **Projected Completion:** 2018

It is recommended that the tennis court be resurfaced. Industry standard recommends asphalt surfaces be resurfaced every 5 years as the tennis courts have been since they were installed in 2002. Funding is included in this Master Plan for future resurfacing.

## **COMMUNITY CENTER**

Lot Acreage: 3.68      Community Center Square Footage: 18,077

Location: One Circle Drive

### **History**

The Town of Meredith's desire to construct a Community Center dates back to the 1940's when the topic was first discussed at town meeting. After several unsuccessful attempts over the years a warrant article was passed at the 2004 town meeting to construct the Community Center. The Community Center opened on April 3, 2006 and it has served a wide variety of needs in the community ever since. The Community Center is managed by the Meredith Parks and Recreation Department.

The demand for the Community Center continues to be strong. Along with many activities being offered by the Meredith Parks and Recreation Department, the Community Center hosts several public service organizations on a regular and frequent basis for meetings, training sessions, public hearings, and presentations. These groups include municipal, school district, State, and Federal agencies. The Community Center serves as a valuable location for numerous Non-Profit organizations as well as private bookings such as birthday parties, reunions, weddings and so on. The Meredith Parks and Recreation Department has registered 3,455 families and 7,900 members for programs it has offered since opening the Community Center. In 2016 the Community Center received 9,750 registrations for the Parks and Recreation Department's "Drop In" Program which is offered free of charge to students in high school, middle school, and to community members, where participants have the opportunity to choose their own activities in the Activity Center, Game Room, and Arts

& Crafts Room. The Community Center has provided a wonderful gathering place for our community and for people of all ages and abilities to play, socialize, learn, make decisions, and plan for the needs of our community in the future. We look forward to working together with the community to help meet the growing demands and make the Community Center available to as many different user groups as reasonably possible.



***Meredith Community Center***

**Lot Features:**

Parking Capacity: 90 / Plus Additional 5 Handicap Spaces

(1) Storage garage

(1) Playground

(1) Stairway Leading to Lower Prescott Park

Town Water and Sewer Service

Picnic tables and benches

Lawn and landscape irrigation

## **Community Center Features**

Fully Handicap Accessible

Full Size Multi-Purpose Room (Gym) with Stage

Climbing Wall

Game Room

(1) Arts & Crafts Room

(1) Large Meeting Room (Portable walls allow to be divided into 3 meeting rooms)

(1) Commercial Kitchen

(2) Office Spaces

(1) Patio

Generator for emergency power

Serves as Emergency Shelter

Air Conditioned

## **Community Center User Groups**

### **Town of Meredith**

Board of Selectmen

Selectmen Workshop

Planning Board

Conservation Commission

Zoning Board of Adjustment

Meredith Public Library

Meredith Parks & Recreation Department

### **State of New Hampshire/Federal Agency**

NH Department of Safety

UNH Cooperative Extension Service

National Guard

Marine Corps League

NH Music Festival

Lakes Region Safety Officials

US Census Bureau

USDA Natural Resource Conservation

NH Waterworks Association

NH Municipal Association

## **Meredith Non-Profit Organizations**

In 2016 the Community Center was utilized by 63 unduplicated non-profit user groups with a total of 296 scheduled events by these groups.

Altrusa	Lakes Region Rebels AAU Basketball
ASTRA	Lakes Region Symphony Orchestra
Belknap County Democratic Committee	Lakes Region VNA
Bill Lamper Youth Basketball League	League of NH Craftsmen
Boy Scouts	L-R Juniors Volleyball Club
Cal Ripken Baseball	Maple Ridge Rd.Village Dist.
Calvary Bible Church	Meredith Community Dev. Dept.
Community Garden Club	Meredith Kiwanis
Corrine Jutton/Fundraiser	Meredith Lions Club
Cub Scout Pack Meetings	Meredith Public Health Association
First Baptist Church	Meredith Rotary Club
Friends of Meredith Parks and Recreation	Mil Foil Crisis Committee
Girl Scouts	Needle Eye Association
Greater Meredith Program	New Horizons Band
Inter-Lakes Community Caregivers	NH Local Government
Inter-Lakes Summer Theatre	Oakland Cemetery Association
Inter-Lakes High School	Pond and Peak Literacy
(9 individual groups/committees)	Village Pathways Committee
Inter-Lakes Middle School	Visiting Nurse Association
Inter-Lakes School District	Watershed Protective Assn.
Inter-Lakes Youth Soccer	Waukewan Beach Colony Council
Inter-LAX	Waukewan Condo Association
Kidworks Learning Center	Waukewan Shore Owners Association
Lake Winnepesaukee Assn.	Waukewan Village
Lakes Region Democrats	Windy Waters Conservancy
Lakes Region Kennel Club	Winnepesaukee Rowing Club
Lakes Region Planning Commission	Winona Forest Association

## **Non-Meredith Non-Profit**

AARP  
Belknap County Convocation  
Lakes Region Community Services  
Parent Information Center  
Miss Lakes Region School Program

## **Meredith and Non-Meredith Private Bookings – Fee Based**

In 2016 there were 79 facility use permits issued.

### **Examples include:**

Birthday Parties

Family Reunions

Celebration of Life Ceremonies

Baby Showers

Special Events

Fundraisers



*Parks and Recreation Holiday Craft Fair Held at the Community Center*

## Existing Conditions

The Community Center generally is in good condition; however preventive maintenance is needed in the short term and long term to preserve the building conditions. The building exterior needs painting, the concrete sidewalks need repairing, the parking lot asphalt needs crack repair and resealing, and curbing needs to be reset in some places. The fire protection sprinkler system needs to be flushed and equipped with drain and flush valves. A storage canopy needs to be added to the back of the garage to park the snow plow truck under. It is recommended that research be done to study the possibility of installing a well to use as a water source for irrigation.

## Recommended Improvements

### Repair Sidewalks

**Cost Estimate:** \$20,000      **Projected Completion:** 2017

Three years ago the concrete sidewalks began to deteriorate and became a trip hazard in several spots. Estimates were obtained for various levels of repair by a professional contractor. The Parks and Recreation Department was directed to make the repairs with internal staff. The repaired areas remained in good condition for 2 years but are now again in poor condition. The sidewalks are failing in other spots as well. These problem areas are a trip hazard and must be repaired as soon as possible.







### **New Alignment of Parking Lot**

**Cost:** TBD     **Projected Completion:** 2020

#### Existing Maintenance Challenges

1. The existing nine 90 degree angles makes snow plowing and removing snow off site far more time consuming.
2. After each storm it is difficult to clean out each 90 degree angle in a timely manner and quite often snow and ice will freeze in the 90 degree corners. This is especially difficult when storms come back to back in a given week. Typically the Public Works Dept. removes snow off site once per winter. During winters of heavy snowfall, such as 2016, snow can build up in the 90 degree corners.

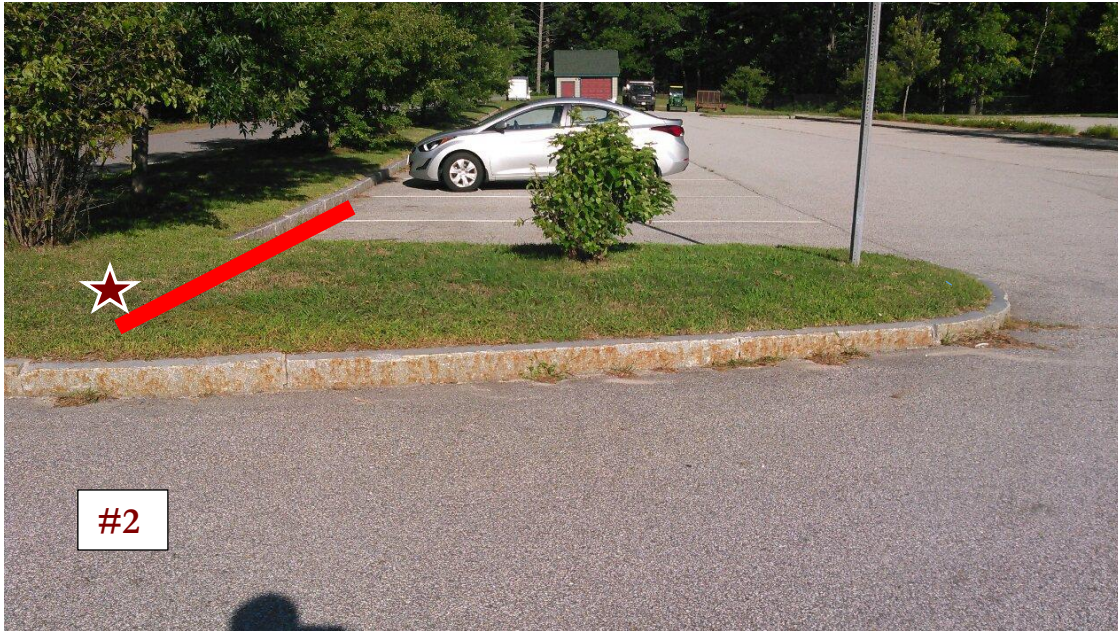
## Proposed Parking Lot Improvements

It is recommended that the parking lot be crack sealed, repaved, and the broken curbing be repaired. At the same time it is also recommend that the curbing be realigned to eliminate 6 of the 9 existing 90 degree corners in the parking lot. This will eliminate a portion of some of the landscape beds as well. The proposed removal of six 90 degree corners will make snow plowing and removal much easier, will save time, and will add 5 additional parking spaces as well. Vint Choiniere conducted a walk-through of the proposal on August 18, 2016 with Meredith Town Planner Angela LaBrecque and she determined that the curb realignment will not require planning board or ZBA approval. A description of the proposed removal of the 90 degree corners follows below.

### Removal of six 90 Degree Corners



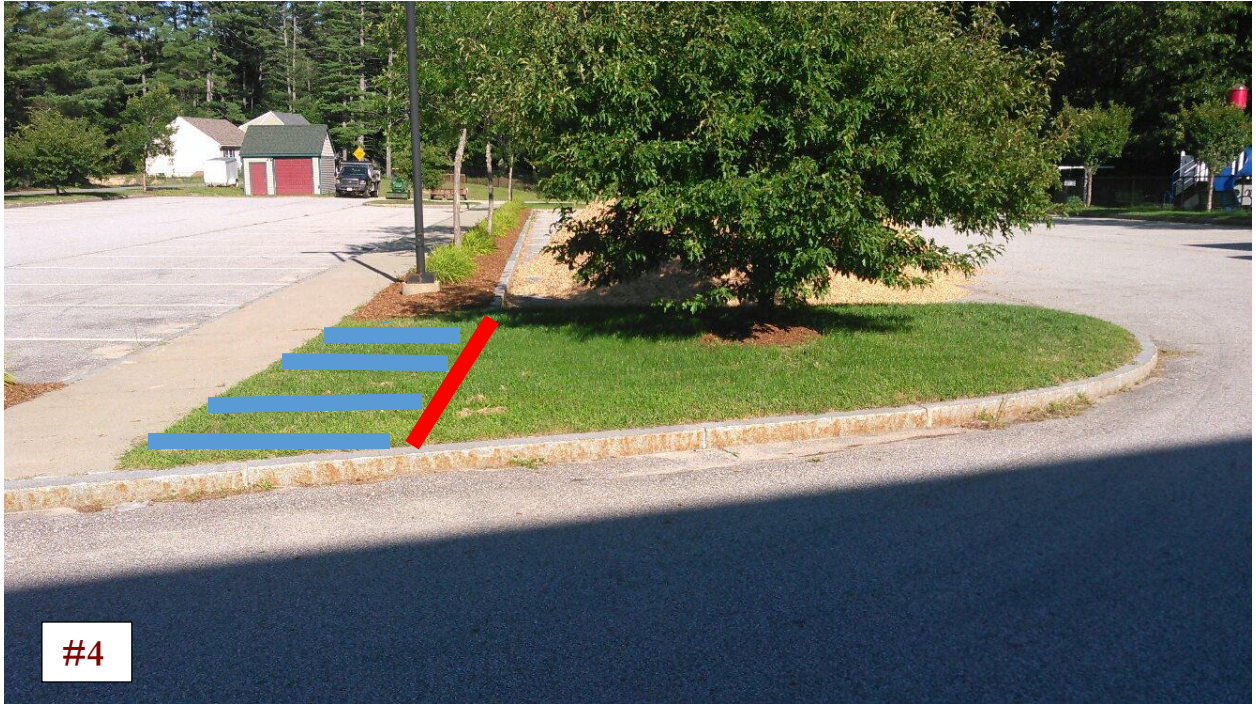
This 90 degree corner is located just to the right of the Community Center entrance. The proposal would eliminate the bump out and create a straight edge aligned with the existing straight edge of the parking lot. The edge would be located just in front of the light pole represented by the red line in the photo. The light pole would remain in its current location. The sidewalk would be replaced with a striped cross walk for safety of pedestrians.



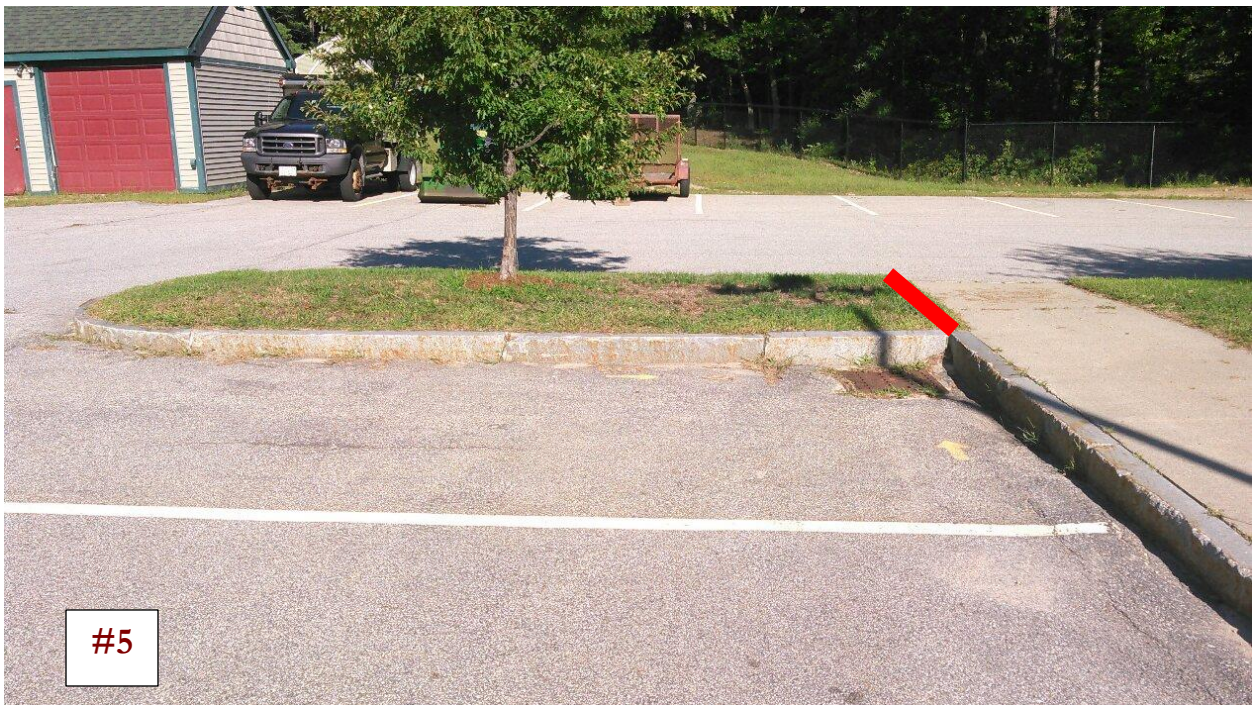
The proposal would eliminate this bump out marked by the red line, to allow a straight and efficient approach with the snow plow. One additional parking spot would be gained. The exit sign post would be relocated to the location marked by the red star.



The proposal would eliminate this bump out at the red line to add one parking space.



The proposal would eliminate this bump out marked with the red line. One parking space would be added. The area marked in blue would remain as a landscape bed.



The proposal would eliminate this bump out marked with a red line. One parking space would be added.



The proposal would eliminate this bump out marked by the red line. The area marked in blue would remain as a landscape bed. Two parking spaces would be added.

### **Construct Vehicle Garage**

**Cost Estimate:** TBD

**Projected Completion:** 2021

Currently 3 vehicles, 2 trailers, and 2 tractors are parked at the Community Center without cover. It is recommended that a vehicle garage be constructed behind the existing garage on the eastern side of the property. This would protect the vehicles and equipment from the weather and vandalism. It would be very beneficial to have the snow plow truck under cover to prevent snow from negatively impacting the sander. Currently staff must cover the sander with a large tarp that is cumbersome to maneuver. It would also serve as a time saver, not having to remove snow from vehicles and equipment throughout the winter. Protecting the vehicles and equipment from the weather would also increase their life span.

## Upgrade Sprinkler System

**Cost Estimate:** TBD

**Projected Completion:** 2019

The sprinkler system will need an upgrade in the near future, as schedule 10 galvanized pipe was installed during original construction in 2005 to serve the dry sprinkler system.

Experienced contractors have informed the Parks and Recreation Maintenance Supervisor that the typical life span of this type of system is 10-12 years. In 2015 an experienced contractor provided a firm cost estimate of \$32,500 to flush the system and install flushing connections. However, the system has reached the end of its expected lifespan cost estimates will be obtained for the replacement of existing pipe.

## Paint Community Center Exterior

**Cost Estimate:** \$31,000.00

**Project Completion:** 2017

Industry standard recommends that the Community Center exterior be painted every 10 to 12 years. The Community Center exterior is scheduled to be painted in 2017 and funding is included in the 2017 operating budget. Additional funding for future painting is included in this Master Plan budget.



## Circle Drive Park

**Lot Acreage:** 1.0      **Location:** On Circle Drive Directly Across From Community Center

On November 11, 2005 the Circle Drive Association donated a 1 acre parcel of land known as Circle Drive Park to the Town of Meredith. Conditions of the deed stipulate that the land must be used for recreational purposes. The park is primarily used by people to sit at the picnic tables to enjoy the peace and quiet or to have lunch. The annual Easter Egg Hunt conducted by the Parks and Recreation Dept. is the only scheduled event to take place at the park. There are no restroom or utility services at the park.

## Recommendations

**Cost:** 0      **Projected Completion:** N/A

There are no projected improvements being recommended for Circle Drive Park at this time. The only cost associated with this park would be the need to remove any hazardous trees that may emerge over time. Although an effort to improve the aesthetics to the park entrance would be a welcomed addition, that location of the park is heavily impacted by snow plows, therefore making improvements in this area of the park would be challenging.

## Childs Park

**Lot Acreage:** 2.48      **Location:** 151 Meredith Center Road

## History

Childs Park was donated to the Town of Meredith in 1980 by Steve Childs and the land tripled the size of the park. The park was dedicated to the Childs' family in 1986. In 2011 and 2012 improvements to the park were made possible by a cooperative and successful public/ private effort by more than 125 individuals, merchants, civic groups, and town departments. These individuals and organizations gave their time, talents, expertise, materials, labor, and funding to renovate the ball field, resurface the basketball court, double the capacity of the parking lot, construct a new full season restroom/storage building, and a

new playground was installed. The lead donor in the renovation project was local Meredith resident Lou Kahn, who made the donation to the construction of the new playground in memory of his wife Barbara “Bobby” Smyth. The Meredith Rotary Club provided professional labor to construct the new restroom/storage building. The Childs Park Renovation was dedicated on September 29, 2012.

## **Features**

Gravel Parking Lot with Capacity of 34

- (1) Year Round Heated Restroom, Town Water, Septic System, and Storage Building
- (1) 60’ Baseball/Softball Diamond
- (1) Playground
- (1) Basketball Court
- (1) Ice Skating Rink

## **Scheduled User Groups**

Parks and Recreation T-Ball Program

Cal Ripken Baseball

Inter-Lakes Youth Softball

Parks and Recreation Youth Lacrosse

## **Existing Conditions**

The playground receives heavy use and the ball field is utilized by the Parks and Recreation Dept. for its T-Ball Program. The park is in very good condition.

## **Recommendations**

**Cost:** TBD

**Projected Completion:** As soon as possible

Alter the traffic pattern on Meredith Center Road to allow for safe entry and exit to and from the park, for both vehicles and pedestrians.

The current layout is very unsafe and it should be realigned to improve safety for all those who use the park. The Town of Meredith and the State of New Hampshire Department of Transportation (NHDOT) have collaborated over the years to develop a new layout of

Meredith Center Road and entry to Childs Park. The NHDOT presented a plan featuring a roundabout in 2008 to the Board of Selectmen. It is recommended that the roundabout plan and any other traffic pattern improvement options be revisited, and scheduled for completion.



*Childs Park*



## Waukegan Highlands Community Park

**Lot Acreage:** 191.11      **Location:** 75 Parade Road

### History

Waukegan Highlands Community Park is a multi-use managed forest that has been owned by the Town of Meredith since the late 1800's. In 1996 work began on establishing the trail system. Four marked hiking trails lead to Hart's Pond, which once served as the town's water reservoir. Low impact passive recreational uses are encouraged such as hiking, snow shoeing, biking, cross country skiing, fishing, and picnicking. Swimming, use of motorized vehicles, and camp fires are not permitted. Hunting is permitted and is limited to bow, muzzle loader and shot gun. A forest management plan was initiated in 1994 and is long overdue for an update.

### Features

The park has no restrooms or utility service.

Handicap accessible fishing stations:

Allows access to fishing in Hart's Pond. The fishing station surface is in need of upgrade.

White Trail      .4 miles

The White Trail is a nice easy walk with fairly consistent terrain. The trail includes an elevated boardwalk through a wetland.

Red Trail      .6 miles

The Red Trail is a moderate fairly narrow walk with many natural obstacles such as roots, boulders, and seasonal streams.

Blue Trail      1.1 miles

The Blue Trail is the most challenging trail with several steep slopes. Many obstacles are present such as stone walls and boulders. A small clearing reveals a northerly mountain view.

Yellow Trail 1.0 mile

The Yellow Trail has gradual terrain and is great for hiking and cross-country skiing. The trail meanders through forest, stone walls, and into an open reclaimed field. The field offers a great view of mountains and Lake Waukegan.

### Interpretive Trail System

The interpretive trail system has 16 stations of interest. The trail guide provides a wealth of information at each station and makes relevant points of interest in regards to habitat, fauna, wildlife, trees, wetlands, streams, seasonal changes, and historical facts relating to the former Town of Meredith reservoir.

### Recommendations

**Cost Estimate:** \$10,000      **Projected Completion:** 2024

Develop a long term Forest Management Plan, incorporating the original plan completed in 1994, to manage all natural resources within the park. The plan should include a well-defined plan of action, as well as a projection of timber harvest revenue to help fund the action plan.



*Waukegan Highlands Community Park - Hart's Pond*

## **Leavitt Beach**

**Lot Acreage:** 28.0    **Location:** 50 Leavitt Park Road

### **History**

Leavitt Beach was donated to the Town of Meredith on March 25, 1945 by Dudley Leavitt. It is a very heavily used beach by the general public for family gatherings, picnics, and school outings. In 2010, in response to budget reductions, funding for all beach staff and the swim lesson program was eliminated from the operations budget. Signage at the beach alerts and warns patrons to “Swim at Your Own Risk. No Lifeguard on Duty”.

### **Features**

Long Scenic Beachfront on Lake Winnepesaukee

Picnic Areas with Grills

Playground Equipment

Seasonal Restroom & Storage Building with Outside Showers

Gravel Parking Lot 75 capacity

Well and Septic

### **Existing Conditions**

The beach itself is in fair condition; however water runoff is causing erosion along the beach in some areas. The beach is scheduled to receive sand replenishment in 2017. A very old steel slide, installed in the 1950's and one ball maze structure is all that remains from the original play area. The structures were removed over the past 20 years due to their unsafe conditions. The swing sets on site are in good condition. The bathhouse was donated to the town in 1991 by Bob and Cindi Fullerton. The building was originally used as a cabin and was relocated to Leavitt Beach on a barge. The donated building was set on concrete blocks and has settled and twisted over the years. The building is in poor condition and is of little value. The seasonal building contains restrooms, outside showers, and storage. A very small building on site that once served as a changing room back in the 1970's, is in poor condition.

It currently serves no useful purpose. The picnic areas and grills are in good condition. The gravel parking lot has a capacity of approximately 75 cars. It is uneven and experiences water erosion during hard rain events. The septic system was installed in 1992.

### **Recommendations**

**Cost Estimate:** \$23,000      **Projected Completion:** 2026

Hire professional design firm to design Leavitt Beach Improvements

Given the age and poor condition of the park features it is recommended to hire a professional design firm to design a full renovation of the Leavitt Beach area. Scope of work will include redesigned layout, existing drainage will be evaluated and modified as necessary, new playground, new bathhouse, new open sided picnic pavilion, and the existing parking lot, septic system, and drainage will be evaluated and modified as necessary.

### **Construct and Install Leavitt Beach Improvements**

**Cost:** TBD      **Projected Completion:** 2028

Construct and install the improvements as designed by a professional design firm.

### **Make Improvements to Leavitt Beach in Phases**

**Cost:** TBD      **Projected Completion:** TBD

Although some improvements to individual elements of Leavitt Beach could be made in phases, doing so would not have the benefits of being a coordinated effort, and therefore would not be as efficient or cost effective. For instance a new playground could be installed individually; however without a full Leavitt Beach design/site plan the playground installation could hinder future development of Leavitt Beach.



*Bathhouse Set on Unstable Blocks*



*Leavitt Beach Parking Lot*



*Leavitt Beach Bath House*



*Leavitt Beach*

## **Waukewan Beach**

**Lot Acreage:** .5      **Location:** 72 Waukewan Street on Lake Waukewan

### **History**

The existence of Waukewan Beach goes back to as early as 1903. The current bath house was constructed in 2008 with financial assistance from a grant awarded to the town by the Land and Water Conservation Fund. The current retaining wall along Waukewan Street, which separates the beach from the street, was constructed in 1974. In 2010, due to budget reductions, lifeguard coverage was reduced to serve only the 6 week swim lesson program Monday through Friday. The beach is heavily used and is unique in that it is easily accessible on foot from the village. Many children are able to safely ride their bikes to the beach as well. The beach is also frequented by many kayakers.

### **Features**

Town Sewer Service

Well

Paved Parking Lot 20 capacity

Small Beach

Seasonal Bath House with Outside Showers

### **Existing Conditions**

Waukewan Beach is in good condition and is scheduled to receive sand replenishment in 2017. Bath house is in good condition. The bath house has no potable water. Patrons access the beach through 2 staircases on either end of the beach from street level.

### **Recommendations**

Cost Estimate: \$2,500      Projected Completion: 2017

### **Design Handicapped Access Ramp**

It is recommended that a handicapped access ramp be designed to allow all members of our community to safely and comfortably access the beach. The ramp would not only provide

access for people with disabilities it would also assist people with strollers and carts as well as people with mobility challenges.

### **Construct Handicapped Access Ramp**

**Cost Estimate:** TBD      **Projected Completion:** 2018

It is recommended that a handicapped access ramp be constructed. More than likely this project would be eligible for grant funding and would receive local support from civic groups as well.

### **Design and install town water line into the building.**

**Cost Estimate:** TBD      **Projected Completion:** 2030

It is recommended that town water service be designed and installed into the building.



*Waukegan Beach Bath House*



*Waukegan Beach*

## **Swasey Park**

**Lot Acreage:** 7.9      **Location:** 12 Waukegan Avenue

### **History**

Swasey Park was donated to the Town of Meredith for recreational use in 1974 by the Eldgridge family. Hiking trails were established prior to 2000 and the park has remained a quiet peaceful location for people to enjoy. In July of 2016, a group of dedicated professionals led by the Greater Meredith Program, volunteered to evaluate the park and make recommendations for improvements. The team conducted a two day charrette to gather public input, and consider possible improvement options, and make recommendations. The team produced a very informative and detailed booklet which summarized the charrette process. The booklet included mapping, history of the park, photos, and outlined the final improvement options of the Charrette Team.

### **Features:**

Within short walking distance of Main Street

Short low impact hiking trails

Access to Waukegan Canal

Picnic tables

Benches

No onsite parking

No restroom

No utility services

### **Current Uses**

The park is utilized by many people for hiking, dog walking, jogging, snowshoeing, having lunch, and fishing. It provides a quiet peaceful area for people to enjoy only a short walk from Main Street.



*Swasey Park Main Entrance*

### Existing Conditions

The Parks and Recreation Department removed several hazardous trees in 2016 and more are scheduled to be removed in 2017, and the department also constructed new picnic tables and benches in 2017. Dog waste stations are provided and maintained by the Parks and Recreation Department as well.

### Recommendations

**Cost:** TBD

**Projected Completion:** TBD

### Phase In Charrette Team Recommendations

It is recommended that the improvement options outlined by the Greater Meredith Program Charrette Team be implemented and phased in over time. Improvement options included providing handicap access to the park, new parking, create a gathering area, interpretive signage, and constructing a dock for fishing near turtle rock. The full booklet can be viewed on the Greater Meredith Program's website link

<http://www.greatermeredithprogram.com/assets/swaseyparkcharrettebookletgmp.pdf> as well as on the Town of Meredith website [www.meredithnh.org](http://www.meredithnh.org) Hard copies are available at the Community Center, Town Hall, and Public Library.



*Senior Exercise Class*

## Inventory of Existing Maintenance Equipment

### Vehicle & Equipment Inventory

Year	Make / Model	Description	Mileage/Hours
2004	Ford / F-150 2 Wheel Drive	Pick Up Truck	23,000 miles
2016	Ford / F-150 2 Wheel Drive	Pick Up Truck	6,400 miles
2004	Ford / F-550 4 Wheel Drive	One-Ton Dump Truck	26,000 miles
2006	John Deere / 2305 4 Wheel Drive	Tractor	1700 hours
2017	Kubota / B2650 4 Wheel Drive	Tractor	50 hours
2014	Wright	Stander Mower	350 hours
2006	Toro	Zero Turn Mower	900 hours
2007	Toro	Ice Mower	N/A
2016	Poulan Pro	Garden Tractor	N/A
2014	Briggs	Rototiller	N/A
2007	Karcher	Power Washer	N/A
2014	Red-Max	Leaf Blower	N/A
2015	Honda	Snow Blower	N/A
2014	Red-Max	Trimmer	N/A
2014	Blue Bird	Slice Seeder	N/A
2006	Mid Atlantic	Landscape trailer	N/A
2013	York	Rake	N/A
2017	Landpride / BB1248	Boxscraper	N/A
2017	Landpride / SB1064	Snowblower	N/A
2017	Landpride / FDR1672	Mower	N/A

### Condition of Existing Maintenance Equipment & Vehicles

Most of the existing maintenance equipment and vehicles are in good condition; however the 2004 F550 One-Ton Dump Truck has required repairs to the exhaust and hydraulic system. It has been down 5 times in the past two snow plowing seasons and on average the down time has been 1-3 days. The One-Ton is of critical importance to the maintenance operations as it is the only truck with a snow plow and dump body. It is also the only truck capable of towing the trailer loaded with the tractor. The One-Ton being down during a snow event creates a real hardship. The maintenance staff is responsible for having the Community Center parking lot and sidewalks cleaned and treated, for safe public access by

no later than 7:30 a.m. six days per week. The maintenance staff is also responsible for plowing snow and clearing walkways at Childs Park, Lower Prescott Park skating rink, Lower Prescott Park parking lot, Prescott Park service road, Upper Prescott Park parking lot, Upper Prescott Building #3, Waukegan Highlands parking lot, and the parking lot at Hamlin-Eames-Smyth Recreation and Conservation Area. Without the truck these tasks cannot be completed.

### **Projected Maintenance Equipment Needs**

**Cost Estimate:** \$50,000      **Projected Completion:** TBD

It is recommended that a new Ford F-550 One-Ton Plow Truck be purchased.

**Cost Estimate:** \$18,000.00      **Projected Completion:** TBD

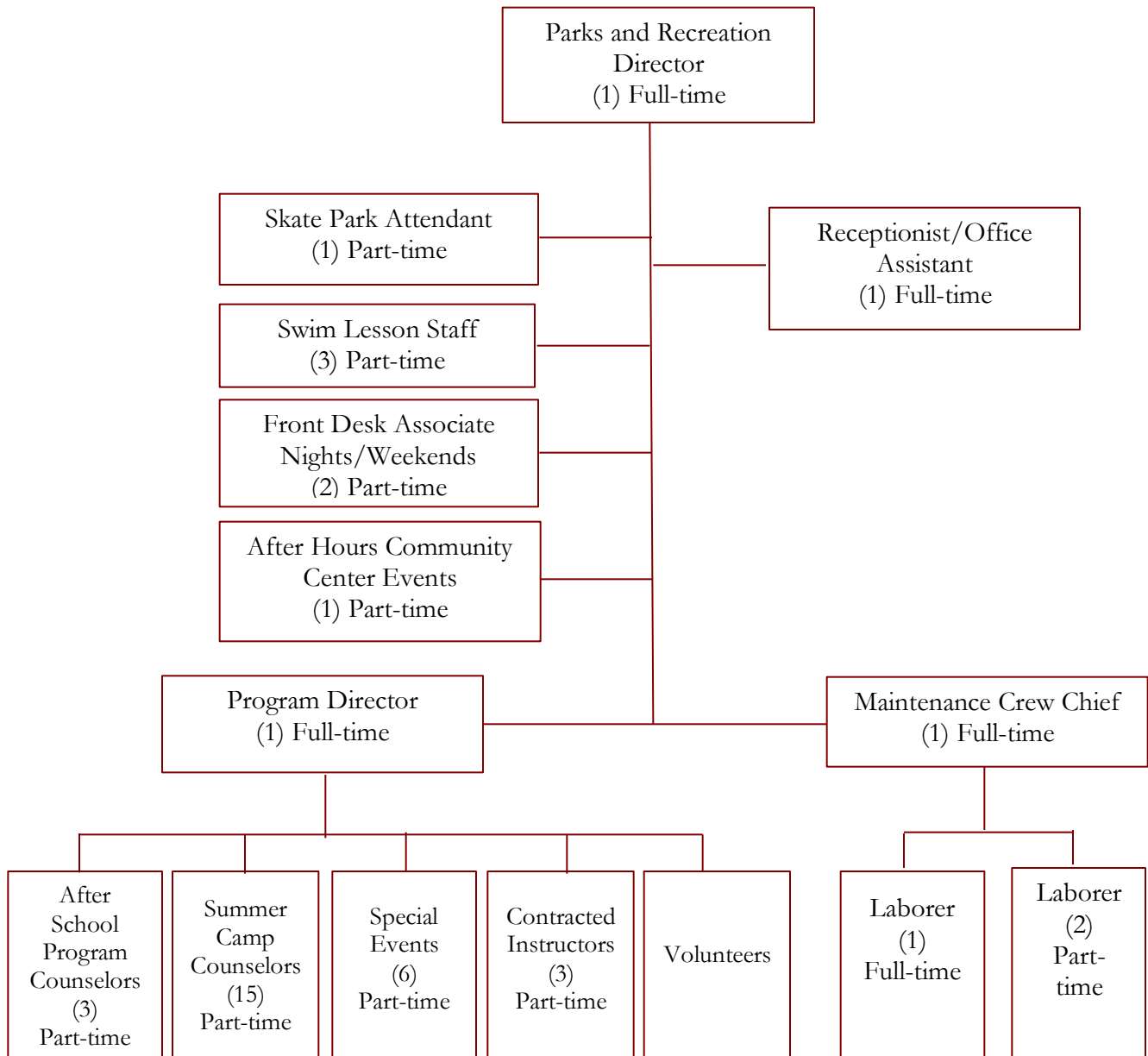
It is recommended that an infield grooming machine be purchased.

Currently infields are dragged with an infield drag mat towed behind a garden tractor. The infield groomer provides several advantages over our current method of grooming infields, such as a zero turning radius, hydraulic down pressure when dragging and several different dragging tools to accommodate all conditions. Dragging equipment currently being used follows the existing contour and does not have the capability of leveling and shaping the infield grades.

The department maintains 5 infields and user groups, as well as the department, expect playing conditions to be of the highest quality to enhance the playing experience and more importantly for safety purposes. The infield groomer would allow the department to better meet these expectations.

# Maintenance and Programming Staff Delivery of Services

**Parks and Recreation Department Organizational Chart**



## **Parks and Recreation Maintenance Responsibilities**

The Parks and Recreation Department is responsible for all aspects of maintenance for the facilities (which includes interior and exterior of all buildings and seven days per week seasonally) listed below, which represents a total area of 272 Acres.

Community Center

Circle Drive Park

Lower Prescott Park

Upper Prescott Park

Leavitt Beach

Waukegan Beach

Waukegan Highlands Community Park – lot and trails

Swasey Park

Childs Park

Hamlin-Eames-Smyth Recreation & Conservation Area (Snow Plow Parking Lot)

### **The routine tasks that are completed at each facility include the following:**

Mowing

Trimming

Landscaping

Repairs of all types including: plumbing, carpentry, fencing, painting, etc.

Trash Removal

Cleaning of Restrooms

Spring and Fall Clean-Up

Rake Beaches

Snow Plowing, Path Clearing and Treat Sidewalks

Repair and Paint Skate Park

Open & Close 4 Seasonal Restroom and Storage Buildings

6 Tennis Courts (2 with lights)

2 Basketball courts (1 with lights)

3 Playground Areas

Preventive Maintenance

#### Maintain 5 Infields

Drag, groom, line and prepare for all Inter-Lakes High School and Inter-Lakes Middle School baseball, softball, lacrosse, tennis, and soccer games and practices. Set up and break down all bleachers, benches, and trash receptacles for all seasons.

#### Line Parking Lots

The Parks and Recreation Department lays out and lines 2 gravel parking lots representing approximately 155 parking spaces. Repainting is performed on a weekly basis.

#### Turf Management Program

The Parks and Recreation Department committed to an organic turf management program beginning in 2010 eliminating the use of chemicals in an effort to protect the safety of all people and their pets who visit our parks. The organic program also reduces the amount of phosphorous levels which helps protect the health of our lakes and streams. The department performs all aspects of the turf management programs in house to include seeding, fertilizing, de-thatching, aerating and applying lime, Hum-Amend, GVH and other soil amendments.

#### Community Center Maintenance

Maintenance responsibilities at the Community Center includes preventive care of the HVAC systems, set up and break down of spaces for multiple year-round activities, special events, meetings, and set up and break down of voting booths for elections. Maintenance staff performs floor refinishing of the entire building twice per year.

#### Special Event Set Up

The maintenance staff supports several events conducted by groups outside of the department, by setting up, breaking down, and assisting in various ways. A few examples of support are painting field grid for fundraiser at Moulton Farm, setting up Memorial Day and Veterans Day presentations at Hesky Park, setting up and breaking down movie screen and equipment at Hesky Park for the Make-A-Wish

Foundation, and setting up and breaking down for 2 employee recognition days each year.

#### In House Maintenance Projects

The maintenance staff has performed many projects over the years with in-house staff. A few examples include installation of Jack's Place Playground and the Childs Park Playground (with volunteer assistance), construction of the Community Center garage, field #2 dugouts, new stairways at Waukegan Beach, new storage cubbies at the Community Center, full replacement of all 4 infields at Prescott Park, and made several repairs to the Community Center exterior such as roofing, trim, siding, and sidewalks.

#### **Maintenance Staffing Review**

The Parks and Recreation Department currently employs the following maintenance staff:

- (1) Full-time Working Crew Chief
- (1) Full-time Laborer
- (1) Part-time Laborer 28 hours/week March 1 – December 31
- (1) Part-time Labor 40 hours/week April 1 – September 1

Budget reductions in 2010 and 2012 reduced the maintenance staff by 70 hours per week.

The reductions have made it difficult on the department to meet all of the maintenance responsibilities in a timely and consistent manner. Although the reinstatement of one part-time staff in 2017 was a positive step, the department continues to operate with a staff shortage.

#### **Maintenance Staffing Recommendations**

**Cost Estimate:** \$55,000 Annually Including Benefits **Projected Completion:** TBD

It is recommended that one full-time maintenance laborer be added to the staff. Not only does the current work load warrant the additional position, demand on facilities and staff will certainly increase over the next 15 years. It is challenging to recruit and retain dedicated and productive part-time employees.

In recent years new sports programs such as lacrosse and football have been added in Meredith for all age groups including adults. New programs will certainly be added and existing programs will expand over the next 15 years. Demand on the facilities and staff will certainly increase, requiring additional maintenance staff to care for the facilities. The community surveys indicated a desire for additional facilities and programs, all of which will require additional maintenance. For instance a strong desire for more ice skating opportunities and improved skating conditions was expressed. With the advent of youth sports being played year round, facilities no longer have the benefit of “down time” to recover. This places greater strain on the facility conditions and on the staff responsible for their care.

### **Review and Evaluation of Existing Programs**

The former Meredith Senior Center was operated and administered by the Community Action Program and was housed in the Meredith Community Center. The Community Action Program rented space at the Community Center from the Town of Meredith to operate the Meredith Senior Center 5 days per week from 8:00AM-2:30PM year round. The Senior Center offered programming, served a hot lunch daily, and delivered lunches daily to those in need. The Parks and Recreation Department offered strong support to the Senior Center in terms of space usage at the Community Center, far and above the terms of the rental agreement. The Parks and Recreation Department and the Senior Center enjoyed a very positive working relationship.

In June of 2014 the Community Action Program made the decision to close the Meredith Senior Center. Shortly after the closure of the Senior Center, Meredith Parks and Recreation Director Vint Choiniere made the decision to assume the responsibility of offering all of the Senior Adult programs that were being offered by the Senior Center at the time of the closure, with the exception of the daily meals. Since that time the department has added programs and activities for Senior Adults.

The Parks and Recreation Department is in need of direction from the Board of Selectmen on what level of services is to be provided to Senior Adults by the Parks and Recreation Department both short term and long term. Census figures demonstrate that New

Hampshire's population is aging at a rate higher than the national average, and Meredith's population is aging faster than the state average. Whether or not to offer the daily meal program as a Parks and Recreation service should be thoroughly researched and considered.

To address this important issue, it is recommended to add a full-time Program Assistant as well as purchasing a bus. The details of both recommendations are explained later in the master plan.

Currently the greatest demand for programming is found within the 5-12 year old age group. The Parks and Recreation Department strives to expand program offerings for all age groups. However, staffing will need to increase in order to achieve program expansion.

### **Current Programs - 2016 Participation Totals**

<b>PROGRAM</b>	<b># PARTICIPANTS</b>
After School Program	54
Summer Camp Can Do (ages 5-14)	229
Mystery Field Trip	98
Sky Zone Field Trip	97
Whales Tale Field Trip	120
Canobie Lake Field Trip Grades 4-8	46
Clarks Trading Post Grades K-3	36
Counselor in Training Program	24
Insanity Adult Exercise Class	4
Adult Tennis Lessons	10
Youth Tennis Lessons	38
Youth Lacrosse Program NEW	22
Adult P/U Soccer Program NEW	13
Adult Ultimate Frisbee NEW	11
Swim Lessons	150
Full Week School Vacation Camps	83
Full Day & Half Day School Vacation Camps	74
Climbing Wall Drop-Ins	85
Coed Youth Soccer Program	64
Coed T-Ball	64
Granite State Track Program	28
Preschool Playgroup	57
Adult Coed Volleyball	27
Senior Strength & Balance Program	149
Senior Exercise	49

Adult Day Pickleball Program	133
Evening Pickleball Program	89
Adult Men's P/U Basketball	90
Craft Fair Vendors	30
Craft Fair Attendees	400
Red Sox Trip	43
Birthday Party Groups	39
Community Center Drop-Ins	9750
Skate Park	300
Annual Christmas Tree Lighting	120
Halloween Bash	200+
Holiday Open House	250
North Pole Calling	40
Holiday Movie Night	100
4th of July Concert	400
Annual Easter Egg Hunt	320
Hart's/Parks & Rec Thanksgiving Dinner	60
Senior Drop-Ins Daily Average	12
Senior Computer Class	8
Senior Monday Morning Movies	8
Senior Blood Pressure/Foot Clinic	25
Senior Morning Walking Group	9
Senior Knitting Group	8
Family Cabin Fever Movie Night      NEW	100

### **Review of Existing Program Staff**

The Parks and Recreation Department employs one full-time Program Director who supervises the majority of programs. The Parks and Recreation Department also fills several part-time positions in support of its programs year round. All part-time staff members are cross trained, allowing them to perform in a wide variety of roles such as counselors for Camps, After School Program and Special Events, such as the East Egg Hunt, Fall Family Halloween Bash, Holiday Open House and Tree Lighting Celebration. Other part-time roles include Community Center Front Desk Associate, Skate Park Attendant, and Youth Sports Coaching, such as, T-Ball, Soccer, and Granite State Track. Over the past 3 years the availability of current part-time staff to work more than one specific role has declined, making it more difficult to find coverage for the many different department responsibilities.

The Parks and Recreation Department also employs part-time swim instructors and lifeguards. Due to budget cuts, key part-time positions were eliminated such as the After School Program Director and the Summer Camp Director. Those duties were then assigned to the full-time Program Director, which severely limits the availability of time to spend on assuring quality of existing programs, developing new programs, and expanding opportunities. The Parks and Recreation Department's ability to offer new programs is limited by lack of staffing and by policy. Current policy states that if a new program or field trip doesn't generate revenue equal to the cost of conducting the program or field trip, then offering the program or field trip is not permitted. If the policy included some flexibility it would allow time for new offerings to grow over time, even if they fall a little short of the break-even margin on the first offering. The department has experienced recent success in offering some new programs by contracting with outside instructors. The Parks and Recreation Department and the instructor share the revenue on a percentage basis. The department will continue using this strategy in the future.



*"Wild Encounters" Parks and Recreation Summer Camp*

## Program Staffing Recommendations

It is recommended the Parks and Recreation Department hire a full-time benefitted Program Assistant position.

**Cost Estimate:** \$60,000.00 Annually and Includes Benefits    **Projected Completion:** 2019

In 2016 the After School Program Director and Summer Camp Director positions were cut from the annual operating budget. Since 2010, all of the responsibilities of these two important part time positions have been absorbed by the full-time Program Director, placing an even greater demand on the Program Director's time.

Adding additional strain on the Parks and Recreation Department is the fact that over the past 5 years it has become increasingly more difficult to fill the various program staffing needs with part-time employees. More experienced and productive part-time employees move on to full-time positions elsewhere, and the daily lives of people are so busy they are unable to volunteer as often to assist with recreation programs. Over the past 3 years the Town of Meredith has been unable to recruit applicants for key part time staffing positions in both programming and maintenance, which has left a major void in both areas. This has caused the After School Program to operate short staffed in the past two years and has also created a waiting list of 29 children that the department is unable to serve, as well as a loss of nearly \$38,000 in annual revenue. When part time positions are vacant it places a greater burden on full-time staff to meet the department's responsibilities, and negatively affects the quality of programs. In addition to the existing staffing challenges, the department faced a new challenge in September of 2017 when it was formally charged by the Town Manager to increase program offerings for Adults and Senior Adults.

Due to the staffing challenges the department is currently facing, and to meet the recently assigned demand for new programs now and in to the future, it is recommended that the department hire a full-time Program Assistant. Adding this full-time staff member would provide consistency, stability, and a greater level of professionalism to the department. Without the addition of a full-time Program Assistant, the department will be unable to meet assigned responsibilities in a safe, professional, and sustainable manner.

## Partnerships and Volunteerism

The Parks and Recreation Department has well established partnerships with local merchants, civic organizations, town departments, and volunteers to offer recreation opportunities to the community at a reduced charge or free in many cases. Volunteers assist the department in programs such as special events, field trips, and youth sports. The department has partnered with many organizations and here are just a few examples; the Trinity Episcopal Church (What's Cooking Class), Beyond the Belt Martial Arts (Karate Class), and the Inns and Spa at Mill Falls (4<sup>th</sup> of July Concert) to expand program offerings. The department has partnered with the Meredith Rotary Club to construct new dugouts, new restroom building at Childs Park, and to renovate the restroom building at Lower Prescott Park. The department is engaged with the community to explore all possible resources to assist with current programs and program development.



*"What's Cooking" Class in Community Center Kitchen*

## **GENERAL DEPARTMENT RECOMMENDATIONS**

### **Purchase New 12 Passenger Bus**

The Parks and Recreation Department is recommending the purchase of a 12 passenger bus to meet the increasing requests for expanding programming and to meet the needs of our senior population.

**Cost Estimate:** \$75,000.00    **Projected Completion:** TBD

This would be ideal for offering small group trips, especially for seniors. The department has had numerous requests to transport children from summer camp to swimming lessons, scheduled trips to special events, festivals, and more.

Contracting with bus companies is very expensive and makes trip fees too expensive for most seniors. The 12 passenger busses can be driven without a special license and they are equipped with the handicapped lift. The bus purchase would be eligible for grant funding and this type of purchase would be well supported by local civic groups and merchants.

### **Credit Card Payments**

It is recommended to offer patrons the convenience of paying registration and facility use fees with a credit card payment system.

**Cost Estimate:** TBD    **Projected Completion:** TBD

46 percent of those who responded to the survey stated that they would use credit card payment 100 percent of the time. At the same time, only 5% stated that no credit card payment option has prevented them from registering. Many who responded agreed that paying with a credit card would be very convenient and appreciated.

### **Signage Program**

**Cost Estimate:** TBD    **Projected Completion:** TBD

It is recommended that all facilities have professional signage at their entrance to identify them as a Parks and Recreation facility. The signage will also include relevant information to guide all visitors as they enjoy the facility.

## **Alternative Funding Sources**

It is recommended that the Parks and Recreation Department seek alternative funding sources to help fund the recommendations included in this Master Plan.

The Parks and Recreation Department has successfully raised private funding over the past 17 years to dramatically lower the cost of several projects, including the Skate Park, Childs Park, and the Community Center. The Parks and Recreation Department is committed to doing so in the future.

It is hoped that Friends of Meredith Parks and Recreation (FRIENDS) will play a major role in future fundraising efforts. The non-profit group was established several years ago to assist the Parks and Recreation Department with fundraising. Volunteerism and activity within the FRIENDS group has been inconsistent. However, renewed interest will hopefully be generated by the Master Plan.

The pursuit of grant funding will be essential in order to fund the ambitious recommendations included in this Master Plan. The Parks and Recreation Department is committed to this grant writing effort.

The Town of Meredith is fortunate to have so many generous individuals, civic groups, merchants, and organizations within the community. The Parks and Recreation Department has received generous support over the years and it looks forward to fostering a continued cooperative effort to help complete future projects.

## **Public Input**

The Parks and Recreation Department worked for several months to collect public input by the following means:

A town-wide electronic and paper survey was open from July 13, 2016 to September 30, 2016. The survey was posted on the Town Website, via Facebook, sent twice to 4500 household email contacts, advertised in local newspapers, made available at the Meredith Public Library, Town Hall, and Community Center. Program staff and receptionists

promoted the survey daily. The Parks and Recreation Department received a total of 141 respondents from the general public via paper surveys and electronic surveys combined.

The department hosted two public forums held at the Community Center on Thursday, July 28, 2016 and Saturday, July 30, 2016.

The Parks and Recreation Director met with a group of seniors who regularly visit the Community Center to collect their input. The Director also worked with the Inter-Lakes School District Superintendent and school principals to survey students in grades 3-12 and received a total of 545 completed surveys.



*Parks and Recreation Adult Volleyball*

### **Master Plan Recommendations Support Survey Requests**

Survey respondents, both students and members of the community, strongly support the recommendations being made in this Master Plan. Strongest support from both survey groups is for the replacement or improvement of the Leavitt Beach Bathhouse, Prescott Park Playground, and Lower Prescott Park Restroom Building. The top request for adding a

new facility that doesn't currently exist is an indoor swimming pool. Students would like to add an Indoor Ice Skating Rink, and a Trampoline Park, among other ambitious recommendations. Interest was expressed to improve ice skating conditions, add a playground at Leavitt Beach, and refurbish the skate park.

It is important to note that 83% of the community wide survey is in support of funding the existing Expendable Trust Fund (ETF) on an annual basis to fund the recommended improvements over the next 15 years.

## Summary of Recommendations

This 15 Year Master Plan provides a detailed analysis of the Meredith Parks and Recreation Department's Programs and facility needs. The improvements recommended in this plan will ensure thoughtful and responsible development of the Parks and Recreation service delivery system for many years to come.

Although the Master Plan includes projected completion estimates for some of the recommended improvements, many unknown factors will influence if and when the recommended improvements will be made. Funding and timing are chief among the unknowns and both will be considered each year, as the decision makers select which of the many worthy projects will receive funding during the budget process.

The following is a summary of the recommended improvements outlined in this 15 Year Master Plan.

### Recommendations, Cost Estimates to Date and Year of Completion

**Note:** 0 indicates TBD

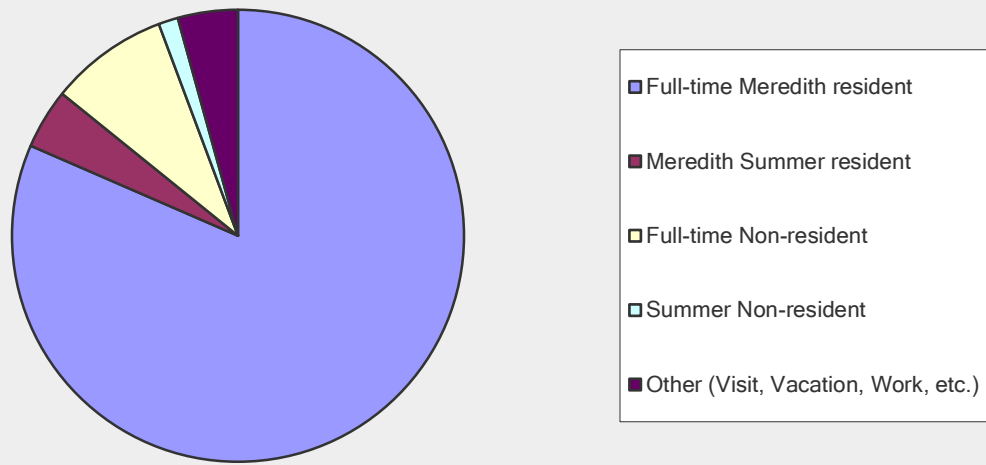
<b>PROJECT/RECOMMENDATIONS</b>	<b>COST</b>	<b>YEAR</b>
Ice Skating Rink Improvements at Lower Prescott Park	0.00	0
Install New Play Experience at Lower Prescott Park	85,000.00	0
Make Swasey Park Improvements in Phases	0.00	0
Install Entry Signage at all Facilities	0.00	0
Purchase 12 Passenger Bus	75,000.00	0
Add Credit Card Payment Service	0.00	0
Interior and exterior renovation of Lower Prescott Park Restroom Building	11,957.00	2017
Replenish and Grade Prescott Park Parking Lot and Service Road	15,000.00	2017
Resurface Lower Prescott Park Basketball Court	9,000.00	2017

<b>PROJECT/RECOMMENDATIONS Continued</b>	<b>COST</b>	<b>YEAR</b>
Evaluate Skate Park Operational Procedures and Upgrade Costs	0.00	2017
Repair and Replace Community Center Sidewalks	20,000.00	2017
Paint Exterior of Community Center	31,000.00	2017
Replace Field #2 Backstop and Fencing at Lower Prescott Park	20,000.00	2018
Evaluate "Pa" Smith Building	0.00	2018
Repair Field #3 Batting Cage at Lower Prescott Park	2,000.00	2018
Purchase Above Ground Irrigation for Lower Prescott Park	9,000.00	2018
Design Improvements to Lower and Upper Prescott Park to Include Parking Expansion and Sidewalks Connecting Both Parks	35,500.00	2018
Replace Baseball Scoreboard at Upper Prescott Park	8,000.00	2018
Install Foul Ball Protective Netting at Tennis Courts	15,000.00	2018
Resurface Tennis Courts	11,500.00	2018
Determine and Define Level of Senior Adult Services	0.00	2018
Upgrade Community Center Sprinkler System	TBD	2019
Construct New Parking Lot and Sidewalks at Upper Prescott Park	0.00	2019
Hire 1 Full-Time Program Assistant (Including Benefits)	60,000.00	2019
Install Lighting and Improve Conditions along the North and South Walking Trails at Upper Prescott Park	50,000.00	2020
Re-Align and Repair Community Center Parking Lot	0.00	2020
Construct Vehicle Garage	0.00	2021
Resurface Lower Prescott Park Basketball Court	10,000.00	2022
Hire 1 Full-Time Maintenance Laborer (Including Benefits)	55,000.00	2022
Resurface Tennis Courts	12,000.00	2023
Develop Long Term Forestry Management Plan at Waukegan Highlands Community Park	10,000.00	2024
Execute Forestry Management Plan at Waukegan Highlands Community Park	0.00	2025
Purchase Ford F550 One Ton Dump Truck	50,000.00	2025
Design Leavitt Beach Improvements	23,000.00	2026
Purchase Infield Groomer	18,000.00	2026
Resurface Lower Prescott Park Basketball Court	10,500.00	2027
Replace Tennis Court Lighting with LED	15,000.00	2027
Resurface Tennis Courts	12,500.00	2028
Construct Leavitt Beach Improvements	0.00	2028
Design and Install Town Water Line to Waukegan Beach Bathhouse	0.00	2030
Resurface Lower Prescott Park Basketball Court	11,000.00	2032

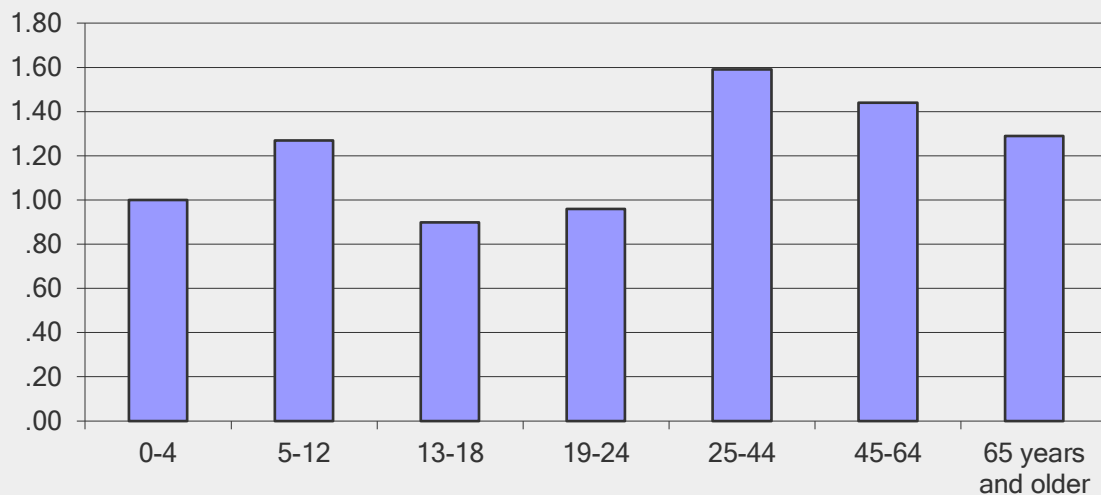
# Surveys

## Town-Wide Community Survey Summary

Which one of the following best describes your residency status?



Including yourself, indicate the NUMBER of people in your household who are in the following age categories.



**From the list below, please mark the top four ways you learn about opportunities offered by the Parks and Recreation Department.**

Answer Options	1st Choice	2nd Choice	3rd Choice	4th Choice	Response Count
Website	36	22	6	15	79
Facebook	10	12	15	9	46
Seasonal Brochure	13	15	23	11	62
Word of Mouth	23	19	21	15	78
Meredith News Newspaper	8	6	4	7	25
Laconia Daily Sun Newspaper	14	15	9	9	47
The Citizen Newspaper	1	2	2	0	5
Community Center Sign Board	6	13	12	15	46
Flyers Sent Home at School	10	16	12	14	52
Email From Parks & Recreation Dept.	19	12	16	17	64

**Comments:**

Do some announcements on twitter

I have a lot of difficulty learning about activities unless I go into the center to check. It would be great to get an email listing what's happening every few weeks or so

It would be great if the seasonal calendar was more visible and easier to find on the Meredith Park & Rec website. It is difficult to find.

Maybe Weirs Times?

Meredith News is my first choice though I find the info offered not current or updated.

Please forward future offerings via email!!

Social media is huge right now, could be used more often to get programs seen by more people! (Also greener)

The Meredith News is my only source of information.

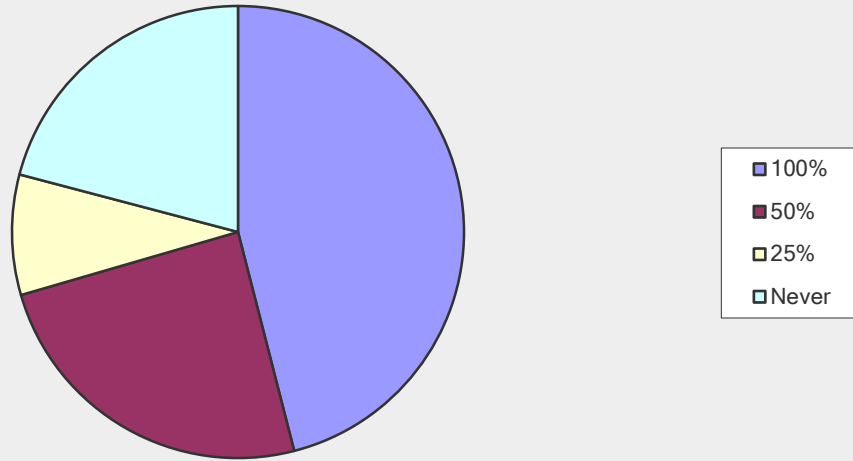
The Meredith paper is usually not up to date on info.

There really isn't any information out there that provides the public about the center.

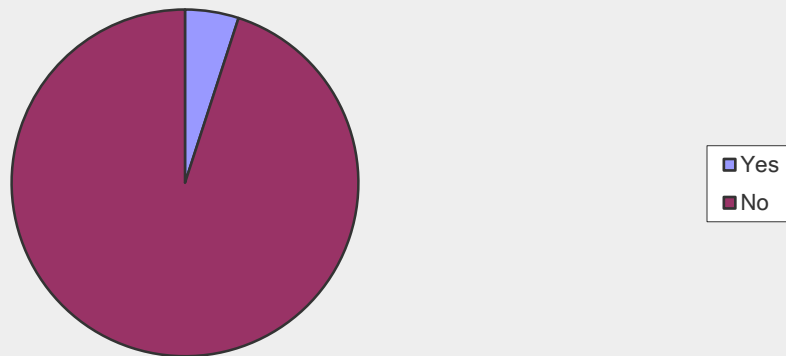
We only started recently participating in programs this past spring (my daughter turned 4 and was eligible for sports programs). Even after doing their spring t-ball program, I never received an email, mailing, Facebook post, etc. about the fall soccer program. I only heard about it through a friend whose husband works for the town. For the summer swim program, my daycare sent home information, we never received anything directly from the Parks and Rec dept. Would love more communication so we could participate and be knowledgeable about what's being offered.

When I first moved here, it was hard to find information online about all of the happenings that Parks and Rec offers.

If available, how often would you use a credit card/debit card to pay for Parks and Recreation services?



Has the fact that the Town of Meredith does not provide the opportunity to pay for Parks and Recreation service with a credit/debit card prevented you from participating in a program or reserving space at the Community Center?



**Comments:**

but it has been inconvenient not to use a credit card

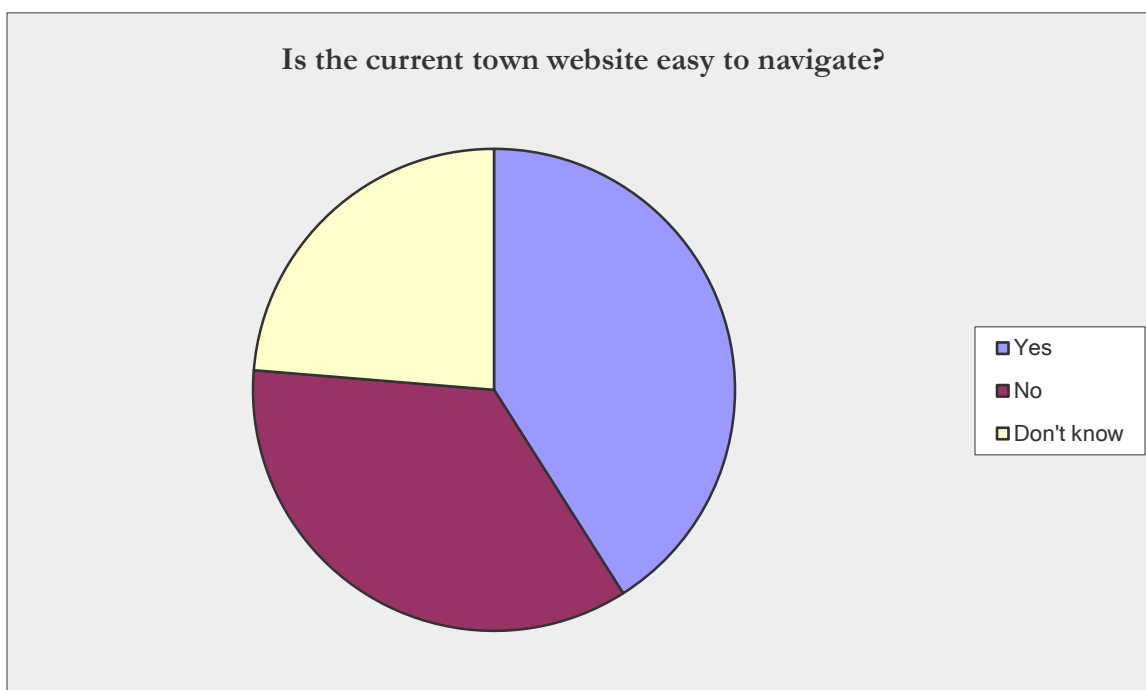
but it is a pain if you have no cash or check book, get with the times, same with town hall to register your crap up there

But would be helpful. Most people don't have check book

Cash or check fine with me.

Hasn't prevented me at all but certainly makes it harder to remember cash or a check when I go in.

I do not carry checks regularly so it would be so much more convenient to pay with a debit or credit card.
I do not like the additional fee that the Town of Meredith charges for using a credit card, so unless that fee is dropped, I won't be using a credit card to pay.
It is just not as convenient
Keep it open.
Much more convenient when it's over a \$50 tab.
No, but that does seem like the option for an advancing world. Something like stripe.com would work easily, almost no trouble.
To me it is but for others I can see them having a hard time.



<b>Please share your experiences with the town website.</b>
All employees are helpful.
All needed info is usually found easily.
Although it looks kind of dated, I have no trouble navigating through it to anywhere I need to go.
Badly designed, hard to navigate
Completely out-of-date...needs complete overhaul. Joomla is a very old platform
Each department should have more tabs to get more information. From info on staff to upcoming events. Only one page per department isn't enough.
Easy to follow and to submit field request forms, which is my primary use.
Easy to use
hard to know where to click if you don't directly go to Parks and Rec department. am i a visitor? should i click under residents but I'm not one? I'm not the government but if I click there it takes me to town departments.

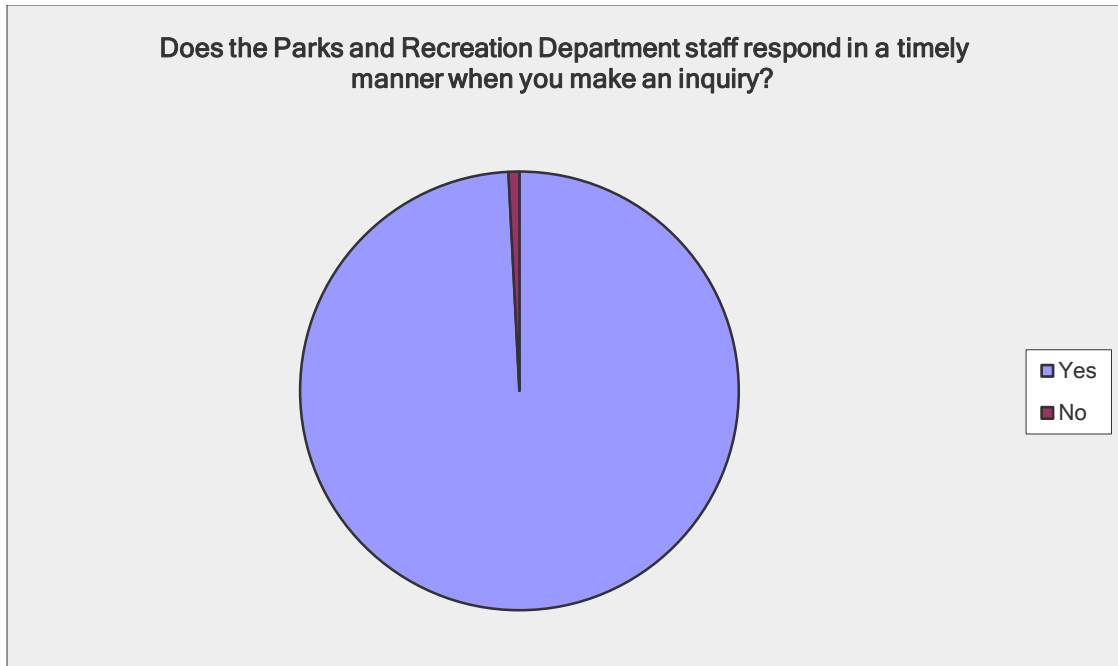
Have easily found what I was looking for, but haven't used it much.
Why did you not just put the survey monkey link in the email???
I can never find what I'm looking for.
I don't recall if I've ever used it.
I feel as though the Search Engine doesn't yield appropriate keyword results. And the tabs holding the subcategories are not clearly laid out with what I'm looking for.
I have none.
I have not used it.
I have used it on occasion and never found it difficult to navigate.
I have used the website frequently to find information regarding the community center and parks and rec and I have always been able to find what I have been searching for.
I think the town website looks very dated and needs much improvement visually.
I use it occasionally for information from various departments. ...No major problems with it.
I use nitro download forms for parks and Rec.
I used it for vehicle registrations and voting forms.
I was looking for senior programs on the website and it is Aug 31 and the last update was late July. Somehow the website should include a description of programs starting at least a month in advance. I dropped by the desk and got the info on the programs and registered there.
I wish Parks and Rec had its own site that was easy to navigate and up to date.
In regards to parks and rec I have only used it for contact information and I have had no problem with the site.
It is not always clear what links to click on to find the information you are looking for.
It is not kept up to date Some items from 2015
It is not user friendly at all especially for younger or older people. I think having tabs across the top for departments would be much easier than links.
It is rather sad in today's world: - Poor visual presence - Tiny, hard to read print - Broken links
It is very good.
It needs a search option which I don't see on the main page. I haven't used the website in the 5 years I have lived here but it needs a modern update with photos. The black and white banner at the top isn't very inviting. A real photo could be used for that area or a scrolling banner like Meredith Village Savings bank has on their website. Other than that I cannot comment on the functionality other than the search option.
It needs an updated look
It would be great if the seasonal calendar was more visible and easier to find on the Meredith Park & Rec website. It is difficult to find. It would be easier if the programs and schedules were in BIG BUTTON formats rather than menu format
It's "busy", meaning a lot (too much) of information provided on the homepage.
It's hard to find information.
It's not always up to date and not always easy to navigate.
It's ok to navigate but having to open multiple pages to find information can be difficult at times.
It's okay to navigate, but not user friendly. Too many clicks and key strokes.
It's pretty jumbled. Takes a long time to find what you're looking for.

It's very outdated.
Jobs on website is good.
Just looking for information
Just not user friendly and seems to need some modern touches.
little use, and hard to find many things when I do use
Mailing address lookup N/A
Needs to be more mobile friendly
None. Haven't used it.
Not always easy to find what you're looking for. Search would be nice. Information is located all over the page, but not organized in to easily digestible sections.
Not up to date for some of the programs offered through facebook or programs mentioned in other outlets
People call all the time for help on the website.
Please share your experiences with the town website.
Primarily use it to view tax maps and look up property owners
Some pages haven't been updated for a very long time so I can't tell if the information is outdated. The menu is not in terms that are obvious as to what one might find there (other than "Assessing and Tax". Important information should be on the home screen and more obvious.
Sometimes I can't find the information that I am looking for and need to call.
sometimes not up to date
Sometimes. Parks and rec should be more prominent for those of us that have kids.
The "Town Website" design is too text heavy, not organized well by date, and does not employ contemporaneous design elements to make navigating easy.
The Parks and Rec part is easy. The rest of town departments are more difficult to find the information that I'm usually looking for.
The website is adequate but not ideal. I find the parks and rec page a little confusing. I am not sure why all the options are pushed to one side. It should be more clearly organized.
The website is cluttered and has no logical flow
There needs to be more subpages and different headings/pages.
There's a lot on the website but I usually have no problem with it
Too busy. A lot of info to sort through. Could use a redesign.
Very helpful
Very old looking, could be updated and easier to navigate. Home page is very cluttered and I think pushes people away from using it.
Very plain Hard to find information about Parks and Rev
Will need to check it out! Never have.
Workable

**Is the Parks and Recreation Department staff courteous, helpful, and knowledgeable when you have a question?**

Answer Options	Response Percent	Response Count
Yes	84.9%	118
No	0.0%	0
Comments Welcome	15.1%	21
<i>answered question</i>		<b>139</b>
<i>skipped question</i>		<b>2</b>

<b>Comments:</b>
Amazing staff!
Don't know; have never encountered them except for perhaps once or twice some years ago.
Everyone is doing a good job.
Front desk help is very helpful and courteous
Haven't met any yet, have just signed up for a program starting early Sept. The receptionist at the front window is most helpful and so is the gentleman at night.
Love them!
No experience
Terri and Vint have gone out of their way to connect with the Inter-Lakes High School in planning both our Freshman Community Day and Scholarship Dinner.
Terri is super.
Terri Thompson and Sarah Perkins are always extremely helpful, answer all questions I have, and respond to emails quickly. They are great assets to the community center!
Terry Thompson is a great representative at the front office!
The staff is ALWAYS courteous, helpful and knowledgeable. I (and my family) have always had a pleasant experience interacting with the staff.
The staff is fabulous!!
They are all great.
Usually, yes. I think someone should oversee the Job Fair activities at the High School. Extremely shocked by the unprofessional treatment received by my son last year.
We have not had good experiences in the past few years so we have not been using the services of Parks and Rec
We love Terry and Sarah!
Whenever I go into the Parks and Rec, the staff at the front desk are always very welcoming and helpful.
Yes very helpful
Yes, I primarily have email contact but don't always here back on whether issues I have raised have been addressed.



**Comments Welcome**

A+

Although, sometimes I wait for a return phone call. Realize that all are busy and sometimes not available when I have questions or concerns

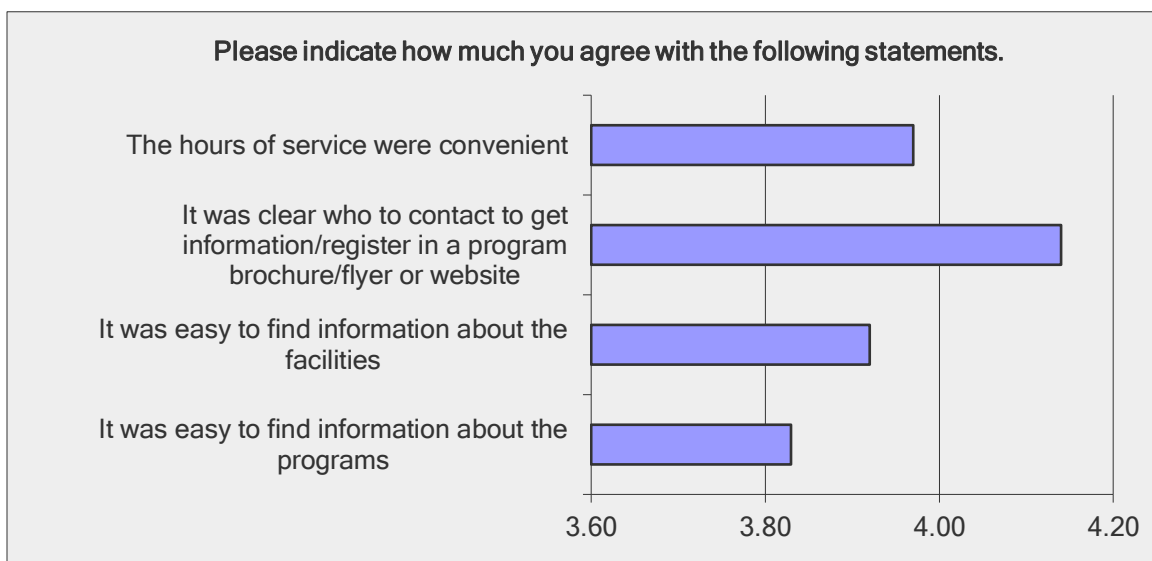
As above.

Everyone is nice when helping someone.

I had a question during camp and I called twice and never received a response.

Not exactly sure who they are, only interfaced with the desk personnel who were quite capable.

Yes, they are always very professional and respond much more quickly than some of the folks from town hall



How often do you and/or your family use each of the Meredith Parks & Recreation Facilities listed below?							
Answer Options	Daily	Weekly	Monthly	1-6 Times Annually	Never	Rating Average	Response Count
Community Center	14	31	16	65	11	3.20	137
Lower Prescott Park	1	14	23	39	52	3.98	129
Upper Prescott Park Fields	3	13	18	39	55	4.02	128
Tennis Courts	1	12	4	28	84	4.41	129
Batting Cages	0	3	1	6	112	4.86	122
Childs Park Playground	1	17	13	35	60	4.08	126
Childs Park Field	2	5	5	27	84	4.51	123
Jack's Place Playground	5	18	20	25	55	3.87	123
Prescott Park Playground	1	6	9	34	76	4.41	126
Skate Park	1	2	4	13	103	4.75	123
Prescott Park Skating Rink	1	3	0	32	88	4.64	124
Childs Park Skating Rink	0	2	1	18	104	4.79	125
Waukegan Beach	4	26	9	40	49	3.81	128
Leavitt Beach	5	17	15	50	43	3.84	130
Waukegan Community Highlands Park - Trails	5	6	11	48	59	4.16	129
Swasey Park	1	6	4	32	83	4.51	126
<i>answered question</i>							<b>138</b>
<i>skipped question</i>							<b>3</b>

Comments:
Better marketing would be good.
Change Prescott Park Playground
Depending upon which grandkids are here, I use the playgrounds more often than monthly, but not usually weekly.
I did not know the playground at Prescott Park still existed. The last time I saw it, it looked as though it was pretty worn and in need of replacement. We love the shady community center playground. We utilized the Prescott park skate rink often this winter while teaching our oldest child to skate but would love if the town would maintain a rink on winnipesaukee right in the bay near the Native American statue
I had to Google search the name of the playground's above to figure out where they are. It would be great to have a link on the Parks and Rec page to show a map of all the local playgrounds.
I use the Community Center weekly on a seasonal basis.
I'm curious to see what is going to happen at Swasey Park. This was one of my playgrounds growing up.
It would be nice to have an updated playground at leavit beach
Just here for a week and brought my son
Justin is now in collage and we hardly use the parks, but we did while Justin was growing up.
Levitt Beach is one of our greatest resources, but is in disrepair. Bath house condition is disgusting/deplorable... We should have a beach attendant to keep dogs off the beach, basic first aid, etc.
Love, love, love Leavitt Beach. Go there almost every weekend June - August.

Many of the facilities like the Prescott Park Playground are not in the best shape and we often find trash and things so we don't use them. The hours that the Community Center is open for the public is not helpful to working parent schedules.
My grandchildren, though now 11 and 10, still enjoy going to the Community Center playground.
My son still goes to community center for basketball. As my kids are getting older, they don't use the facilities like they used to with the youth league sports.
newspaper listings of activities are often wrong; does not seem to updated well...regarding pickleball dates; daily use above is during indoor pickleball season .not summer! I have never heard of a couple of the parks above!
Not really applicable to active seniors!
Please, please, please. OPEN SKATEPARK up. Want to use 4/5 days a week in good weather but never open. The facility is there and better than others in region. But always locked!!
The community center evening hours for seminars are inconvenient. I am co chairman of our watershed group, and we hold two seminars at the community center each summer and pay a fee for the use of the room. Because the center closes at 8 pm, we have to start our seminars no later than 6:00 which is an awkward time for many people. Most would like to come from 7 to 8:30. I wish the community center could be open until 9 pm.
The playground at Prescott Park is in need of an update. Although it is near to the Community Center, it provides a nearby play area for siblings watching sporting events. The equipment at Leavitt Beach (playground and bathroom facilities) are also in need of an update due to safety concerns. We utilize the trails at Hamlin and love them. It would be nice to see the doggie bags and trash receptacle at all town trails.
The skate park has ridiculous hours. Other communities make their skate parks available for reasonable access on any day during the season. It is foolish that we do not. My son loves skateboarding, but has a job that made it impossible to make the only two days and limited hours that the skate park is available. We are told the limited hours are because it costs too much money for an attendant. Other skate parks do not have an attendant. Do we have an attendant for the tennis courts?? Why are skate boarders being discriminated against? Is there some perception having an attendant reduces liability for injuries? My wife broke her wrist at the tennis courts--is the town somehow liable because there was no attendant? Of course not. This is discrimination plain and simple and I pay enough in taxes that we should have as much access to the only facility that is of interest to our child as others have to the tennis courts or baseball fields.
The tennis courts with lights are great. I've also played volleyball at the Elementary School over the last few years, played vball years ago at the Community Center and am now interested in returning there, perhaps with friends. I will be inquiring soon.

How would you rate the condition of the facilities listed below?							
Answer Options	Excellent	Good	Fair	Poor	No Opinion	Rating Average	Response Count
Community Center	94	35	3	1	6	1.49	139
Lower Prescott Park Fields	28	44	16	3	43	2.92	134
Upper Prescott Park Fields	32	48	9	1	44	2.83	134
Tennis Courts	24	32	8	0	68	3.42	132
Batting Cages	3	11	10	1	107	4.50	132
Childs Park Playground	29	34	6	2	62	3.26	133
Childs Park Field	12	27	11	1	82	3.86	133
Jack's Place Playground	46	36	5	0	46	2.73	133
Prescott Park Playground	5	16	22	27	63	3.95	133
Skate Park	2	12	19	8	89	4.31	130
Prescott Park Skating Rink	3	19	22	7	83	4.10	134
Childs Park Skating Rink	2	11	14	3	101	4.45	131
Waukegan Beach	12	37	28	9	46	3.30	132
Leavitt Beach	15	45	23	6	44	3.14	133
Waukegan Community Highlands Park - Trails	19	37	5	1	71	3.51	133
Swasey Park	9	22	10	2	86	4.04	129
<b>answered question</b>							<b>139</b>
<b>skipped question</b>							<b>2</b>

Comments Welcome
Bathrooms at Leavitt Beach need some updating! The swings there all summer needed the trees cut back and a tree root needing to be removed from the sand under the swings. A foot got caught while swinging because the root was in the path of swinging feet!!! Better marked parking spots.. very narrow path with so many large SUV vehicles. Waukegan Beach, add a gate to the top of each stairway to keep children from crossing the street / running into the street. Some parents have their children walk up the stairs in front of them so they don't fall backwards. Designated smoking areas at the beaches!
Buildings need more TLC at all locations. Snack bars at beaches. Fields 2 & 3 need to be brought up to grade in places so it's not a swamp when it rains. Upgrade camera system for safety.
Condition of beaches- cleanliness, facilities are not acceptable in my opinion... trash on the beach. Attendant needed at Levitt.
Everything is fun.
I do not support the efforts to "enhance" Swasey Park by increasing the number of trails, adding handicapped access (it's just too small to warrant that), and mostly I do not want shore access and water access increased, as that will be detrimental to the canal and affect all of us who live on the canal.
I do not think removing the garbage pail at Waukegan Highlands was a good idea. I have personally picked up garbage in the parking lot and along the trails left by others that I must bring home to dispose of. Please bring the garbage pail back.
I feel that Leavitt Beach bathrooms could use some maintenance, as well as the playground options provided. They look outdated and unsafe. Ex. tall metal slide, spinning wheel
i think more care could be put into our facilities. The beaches for example are always covered in trash and never seem to be raked. The playground equipment at Leavitt is beat as well.
I would love to see Swasey Park cleaned up a little. Also, Jack's Place is becoming weathered in some areas.
It is disappointing to see the poor conditions of the buildings at Prescott Park. This shouldn't happen in our community.

It would be helpful to have seating at the rinks to allow for resting and lacing up skates. Possibly a warming hut, too. Restrooms and playground at Leavitt are in need of a complete overhaul.
Leavitt Beach bathrooms/change rooms really should be better.
Leavitt beach shower heads need to be replaced or descaled.
Need to have lifeguards at beaches. Need more clean up at beaches. Tennis courts need work.
poison ivy and brush growing
Recently enjoyed some time at Leavitt Beach. I was disappointed in the Playground equipment for our grandkids. The bathrooms were not very clean. There used to be much better grass/lawn between the large rocks and the woods-not anymore!!! This would be ideal for blankets, sitting in shaded areas, etc. this is a gem of a beach for Meredith residents. Let's take care of it. Public Works Dept. does an excellent job plowing in the winter for ice fishing access-thank you!!
Skate park needs updating
The beach itself is clean but I rate it fair because people will not walk to the beach to throw their trash away. They throw it in the parking lot or on the RR tracks. I recommend that a garbage receptacle be placed in the parking lot next to Monkey Pond, the one on the north side of Waukegan Street.
The community center is a wonderful asset for Meredith and surrounding communities. My husband and I attend regular exercise classes there and have participated in various functions over the years, even though we are full-time residents of New Hampton.
The grounds at the Community Center could use more attention... Especially the flagpole garden area.
The skate park is never open when we want it to be.
The staff does an excellent job taking care of the facilities.
Waukegan beach area looks run down. It could use a fresh mural on the wall and new benches. Maybe a good community outreach project for the high schoolers? One of the foot sprayers at the shower area is broken. Also, it would be great if the sand was tended to more often because I find glass on the beach almost every time I go to visit. I do like how the bathrooms seem to be cleaned regularly!
Waukegan Beach we attended swim lessons last year and my kids found shattered glass on the beach- trash and dead mouse floating. Pretty disgusting when you're there to attend swim lessons. Prescott Park Playground is very run down. It needs a face-lift or torn down for better basketball court or more grass. We LOVE Jake's playground it's Wonderful!! Fields are always well groomed and maintained very well!
We recently used Leavitt Beach for a football team feed and a few of us mom's were really disappointed with the number of cigarette butts all over the ground around the picnic tables. It was disgusting and we will remember to bring rakes in the future. Other than that all the other facilities are very well cared for.
We would use the skate park a lot more but feel that it is in need of repair and upkeep. It would also be great if there was a clean, shady place for parents to sit. Maybe add a sun shade structure over the area where the picnic table is or by the bleachers.
With the exception of the ice in the winter at the front entry way the community center is a beautiful facility.

you need to step it up you have no little league field for 12u baseball the kids need to have a pitching mound and grass infield to better compete for when they get older into junior high/high school. also makes it so junior high has a field. you offer no concession stand to raise money to help fund softball or baseball, also youth soccer could use it. also parents from other areas come to watch there kids play always say they never knew there was a back park because the road going to the back fields suck and no signs. also parking up there is a joke, offer all you want but people don't want to lug there equipment up there. the ice skate park is a joke, who in the hell wants to take 300.00+ pair of skates hit a air pocket and bang them up, you need a firm level surface that's not dark to keep it from melting. maybe the tennis courts then paint the pavement white or maybe a white tarp?.

**Please rate how well you feel each of the current facilities listed below is meeting the needs of the community.**

Answer Options	Fully Met	Met	Partially	Not Met	No Opinion	Rating Average	Response Count
2 90' Baseball fields	20	30	9	2	73	3.02	134
4 60' Baseball/softball fields	18	31	7	2	76	3.07	134
5 Soccer fields	27	37	7	1	62	2.78	134
1 Practice football field	22	23	10	1	76	3.07	132
2 Outdoor basketball courts	17	23	17	7	71	3.10	135
1 Skate park	19	22	14	7	71	3.08	133
3 Playgrounds	32	44	20	3	34	2.44	133
2 Hiking trails	20	47	14	4	47	2.70	132
1 Multi-purpose room/gymnasium	54	44	14	3	23	2.07	138
1 Climbing wall	49	35	7	0	43	2.33	134
3 Meeting spaces	44	40	4	3	44	2.38	135
1 Arts & crafts room	36	42	4	2	48	2.50	132
1 Kitchen	38	33	5	3	56	2.61	135
6 Tennis courts	30	34	6	1	62	2.76	133
<b>answered question</b>							<b>138</b>
<b>skipped question</b>							<b>3</b>

### Comments:

the baseball fields theirs only one! the high school upper field, the rest of what you call them are MULTI PURPOSE fields. the one in the back you ripped up was a old men's league field. its useless!

Accessibility will vary based on age. Reach out to the school to conduct focus groups with various age groups once school begins. This could provide some great info related to the reach of various facilities/programs. Kitchen: Is this resource available to those looking to cook/preserve for farmers markets, catering, etc.? If so, potential exists to market this to those looking for a commercially approved space.

Again, not applicable to most active senior citizens.

As my child gets older, I will most likely be using the other facilities that I do not have an opinion on, and my opinion will change.

Concession stand. More parking

Everything is OK.

I don't use most of these, so I don't know how well they meet the community's needs.

I feel that we have enough facilities. They just need maintenance and in some cases, like the skate park, updates and improvements.

I would like to see a weekly open gym/climbing wall/family night esp. during the winter rather than just the first Friday of the month.

More hours to play pickleball.
More sports to play.
Need more courts with lighting for night play.. In addition, the present lights are not aimed correctly, producing uneven lighting. Parking at the tennis courts and upper fields is inadequate.
Not really familiar with the age groups in Meredith so difficult to determine if the facilities are adequate. Have helped out with a Community Dinner and the kitchen and room seemed quite adequate. Maybe an additional arts & craft rm but not knowledge of the usage.
Outdoor basketball court needs complete resurfacing.
The baseball field on the upper field could really use a score board!
The gymnasium is only open during inconvenient times. I would love to see it opened up on a weekend morning in the winter perhaps? Also, the cost for Meredith residents should be much lower.
The skate park and lower Prescott basketball courts are older
The tennis courts are the main facility I use. I play regularly there spring, summer and fall.
There is a room mornings for seniors to use but no specific activities except a movie one time per month offered.
There is limited accessible access to the lakes for those of us who enjoy paddling.
We have a beautiful facility that is in no way being utilized to the best of its ability. I do not think it is well advertised that you can use the facility and I think the prices to use the space for tax payers is way too high. You can rent private places way cheaper.
We use lower Prescott quite bit and we never see the skate park in use. Overall, we need more lighted field space for fall sports - flag football, soccer and lacrosse.
would like to have one tennis court marked for pickleball..on each side..as done in Moultonborough. no red lines though! could possibly check out nets at community center or store in box at the courts as done in Moultonborough;
Would like to have pickle ball lines put on one of the tennis courts.

<b>Please share specific improvements you would like to see made at existing facilities.</b>
A space with a bank of computers for after school kids to use.
Additional tennis courts are needed. Clean, paint and refresh skate park. many of the surfaces are warn and peeling.
Bathroom outside at jacks place. Hard to rush in a potty training child.
better drainage in the fields at lower prescott park
better hours for some acitivities
Better water fountains and tennis court benches
Cleaner beaches!
Continue to be sure groups clean up after themselves.
Don't know.
Full set of lights on tennis courts #3 & 4
Garbage pail at the Highlands.
I don't think anything specifically.

<p>FIX the block building, the shingles are peeling off the roof. it would be nice if the bathrooms were improved. the playground @ the lower field is hazard. whens the last time someone looked at the damn light post to the skate park. you have more poison ivy and every invasive plant know to man near field 2.you cant see the wood vine taking over the trees. sounds like a great idea lets take grant money and build a trail down Hawkins swamp. it wouldn't hurt to take some gravel and a grader and hit that road up to out back and do the parking area as well. make it so some one who is handicapped can sit in there car and watch a game. not jam them to a rock wall. make the bathrooms known on the upper field. Fix the back stops there ready to fall over. put more fencing on field 2 near the road stop the balls going into the poison ivy. clear the under brush all around the upper fields make it look like something.it shouldn't be the hidden park. you should be able to see it from the school. run a water fountain to the upper soccer field.</p>
<p>I am sure if my kids were older I would understand how needs are met for some of the other facilities (baseball/softball fields, skatepark, basketball courts, etc). But at this point, with a 4 year old and a 9 month old, our needs are being met.</p>
<p>I think there's a lot that could be done at Prescott. Many of the fence covers are broken, the playground needs an update (slide is not usable), and PA Smith building could be renovated for better use by the various programs</p>
<p>I would like more attention put on our beaches. Need full-time lifeguards to enforce rules and provide regular clean up of beaches. Tennis courts need some work.</p>
<p>I would like to see the playground at Prescott Park either refurbished or gone. I do not like letting my kids on that playground.</p>
<p>I would like to see the tennis courts benefit from regular maintenance. There should be no vegetation growing on the courts or at the perimeter fence. A buffer of stone between the courts and grass would help. In addition I would like to see surface maintenance budgeted annually, so that on a rotation basis the courts would receive adequate attention so as to NOT deteriorate beyond repair. Also wooden benches (see Moultonboro courts) are superior to plastic that dries out and breaks.</p>
<p>I would like to see them all way cleaner and feel like the towns people are wanted in them. Often it feels like you are a nuisance when using them.</p>
<p>I would like to see/hear music. Didn't P&amp;R sponsor groups to play on a weekly schedule during the summer. I always looked forward to Any Gallatin and Still Waters. Think they are the best of the imports. But local talent is so awesome and available and probably less expensive, I definitely would vote to bring back music to our town.</p>
<p>I would love to see more organization/effort/support/activities provided to the afterschool program. It doesn't appear to have the structure needed to fully support all age groups K-8. This would include greater staffing/supervision for students. I would also like to see before school care as there are very few options available to working families in the district.</p>
<p>I'd love to see the ice rink improved for the winter months. Currently we go to Moultonborough for that with small children. The side rails, benches to sit on, and maintained ice provides a good experience.</p>
<p>Improve Prescott Playground with new equipment.</p>
<p>Improvement in offering Seniors more activities.</p>
<p>It would be great if the community center was more of a destination, how about a bowling alley or indoor ice rink?</p>

Later hours for parents that work. For after school program.
Leavitt beach bathroom/change room areas.
Leavitt Beach sand is gross and should be removed and replaced.
lighting up more fields, update lower field field house
Lower Prescott playground and basketball court updated
More activities for preschoolers during week day moornings.
More climbing wall hours.
More swings at Childs Park.
More upkeep to the upper baseball field after the high school season is complete. My group would like to be involved in making that happen.
music system in the community center gym
new bath house at Levitt with Beach attendant
New coat of paint at skate park, additional lights for the tennis courts
None at this time
Open-Ended Response
Perhaps a room dedicated only to senior activities. Finding a way to provide meals at the Center such as those in Moultonboro.
Perhaps classes taught at the Community Center? I can't imagine that would be cheap, but it would be a good thing for interested persons.
Prescott Park either needs to be torn down or revamped. The lower soccer fields need work. Swasey park needs to be cleaned up.
Prescott Park needs improvements to the bathroom facilities, as does Leavitt Beach. Very outdated. Pave Prescott park and strip parking lot.
Prescott Park playground is unsafe for children and extremely outdated. Should be closed or renovated.
Put funding into rehabbing outbuildings
Re do basketball courts at Prescott. New playground at Prescott.
See above regarding the tennis courts.
Senior activities certainly could be improved.
Skatepark
Soccer fields need to be leveled; drinking fountains need to be provided at all fields; parking lot needs to be paved & parking needs to be improved at the upper fields; the skate park needs to be open more during the summer
Steps at Waukegan beach replaced , new playground at Leavitt beach and better kept skating rinks, wider road to upper Prescott field
The old baseball field should be taken care of so that it can be used. Dugouts are in need of repairs, as well as the other buildings at Prescott Park
The playground at Prescott Farm could be updated.
The playground near the skate park needs to be redone.
The tables in the Meeting Room A near kitchen need to be scrubbed. I was embarrassed to see them at the latest Community Dinner...although we covered them
Think the tennis courts are used regularly, haven't been up too close on some of them but they need regular maintenance in order for people to play.

Transportation the only reason my kids don't go there is the swimming lessons transportation issue.
Waukegan beach could use a little TLC.
The tennis courts are well used, partially because they are lighted. The bulbs in the lights need to be maintained better. There are often some not working. The types of bulbs used need to be the same throughout all the fixtures for the lights to be effective. For years (5-8?), there have been differences in the bulbs in the fixtures (they work but their 'light outputs' are different). This makes for a less than great facility, when it could be excellent!
Update restrooms at the Prescott park ball fields. Create better storage space for equipment at Prescott park.
Updated playgrounds (prescott park, Leavitt); doggie poop bags and trash cans; updated bathrooms (leavitt beach); benches at skating rinks
Waukegan beach area looks run down. It could use a fresh mural on the wall and new benches. Maybe a good community outreach project for the high schoolers? One of the feet sprayers at the shower area is broken. Also, it would be great if the sand was tended to more often because I find glass on the beach almost every time I go to visit. Additional parking spots and improved access to parking at Upper Prescott Field.
Waukegan Beach could use something like picnic tables, playground?? Where to do this-not sure but would certainly be nice!! Leavitt Beach needs a facelift as mentioned above!! Still a beautiful and useful park but it needs to get back on track. Swazey Park needs some professional help. There are several trees that are broken and simply hanging up in other trees. A tree service needs to clean this up!! There are several trees down on the shoreline-there never seems to be any type of maintenance performed. Some signs for trails have been removed by people. Swazey Park needs parking for about 4 cars-presently people park in the grass and tear it up when leaving. Many people are using this park for dog duties and not picking "things" up. Little kids come through there all the time!!!
Working scoreboards on the upper fields.
Would love to see leavitt beach's bathroom facilities updated.

<b>Please share what new facilities you would like to see developed.</b>
12u/junior high baseball field with mound and grass infield. new soccer fields raised up to help drainage. better parking all around. better access to bathrooms "its ok to put more than one in in different locations" better access to water fountains, concession stand for not for profits to use. we need to keep youth programs going! 4 dollar burgers and dogs add up. take a look around Franklin Odell park does great, also Newfound Wells field has a great shack that every one can use and take pride in. Both have great bookkeeping announcing booths. shrink down the skate park. possible put the ice rink with it make it so some hockey can be played, get some boards with glass after all we do host one of the largest pond hockey tournaments.
A community fitness gym like the one in Gilford for residents to use free of charge would be amazing!
A COMMUNITY POOL!!!!!!!!!!
A course/trail for fitness walking/jogging. Something indoors would also be good.
A disc golf course would be a great addition to the parks
A plan to further increase universally accessible areas and an emphasis on planning with conservation, lake quality, and renewable resources in mind.

A town indoor swimming pool
After school program
Better bathroom facilities at fields/parks - Prescott
Don't know.
Fenced in dog park where we can let our dogs off leash and they can all play together.
Fix the Prescott park playground.
Frisbee golf course would be nice.
Hawkins Brook Trail
I believe that we have a great foundation of facilities!! How about a playground closer to downtown like at Scenic Park?? This would be so helpful and enjoyable for young families. Maybe a few picnic tables in Heskey and Scenic Parks??
I don't think we need new facilities. I think we need to use the ones we have in new ways. The book walks were great in the past and my kids loved them. Getting things in them that families can do together would be great. A beach party before going back to school just for the kids of Meredith or something like that.
I know it costs a lot of money, but it would be beneficial to have an indoor swimming pool for year round swim lessons, swim teams, recreational uses etc. Trying to find LOCAL year-round swim lessons is quite difficult.
I think the current facilities should be improved and maintained before adding new facilities in town.
I would like to see an upgrade on the skate park.
I would love to see entertainment back at Hesky Park in the summer. It was a great way to bring the community together.
Indoor pool. With the loss of Laconia Athletic Swim, there is no indoor facility to swim during the winter months.
Indoor sports fields
Indoor walking during winter.
Inter-Lakes high turf field needs lights and snack shack.
It would be nice to possibly have a teen center
Land for garden plots. Not everyone has space to plant a vegetable garden and a place to rent a plot of land from the town for gardening would be nice. Plant apple and other fruit trees around the area free for residence to pick. Any open field that needs to be mowed by the town can be used for garden space.
More community events
more elderly events and programs
Music classes/lessons!
new bath house at Levitt beach
None
None at this time
None come to mind.
None!
Nothing I can think of at this time.
Outdoor pickleball courts.

Playground spaces for small children that are too young to use the larger structures. Ex. playhouses, ground-level climbing structures, tire maze, etc.
Ropes course.
Snack bars at lower & upper Prescott and at beaches OR authorize quality and inexpensive vendors for each location.
The playground at Prescott needs a little cleaning
There needs to be parking developed for the Upper Prescott Park fields and tennis courts. When school programs are taking place on the Upper fields, the parking situation becomes untenable. People park in haphazards way near the Upper fields, if possible, then along the sides of the roadways, then often blocking the handicapped lane and the maintenance building. With cars trying to turn around when they have driven in looking for parking and there is none and cars lining the roadway, all with participants and fans moving about on foot, it becomes a safety hazard to pedestrians.
Water spray park
We are very fortunate to live in a community where we have access to great recreational resources. If funds were available to expand, I would be interested in cardio/weight room and swimming pool.
We need an indoor pool!
Would love to see a bike path like the WOW trail. Would also love to see the area around the upper Prescott football fields developed into a 2 lane (or double width) walking track. Bushes need to be cut back, dog poop cleaned up, path more defined and perhaps grated or resurfaced with tar
Year-round swimming pool with lap lanes and family space. Year-round swim lessons. I understand that this type of facility typically runs at a deficit, but perhaps there is some cost-sharing with other towns or programs to support it.

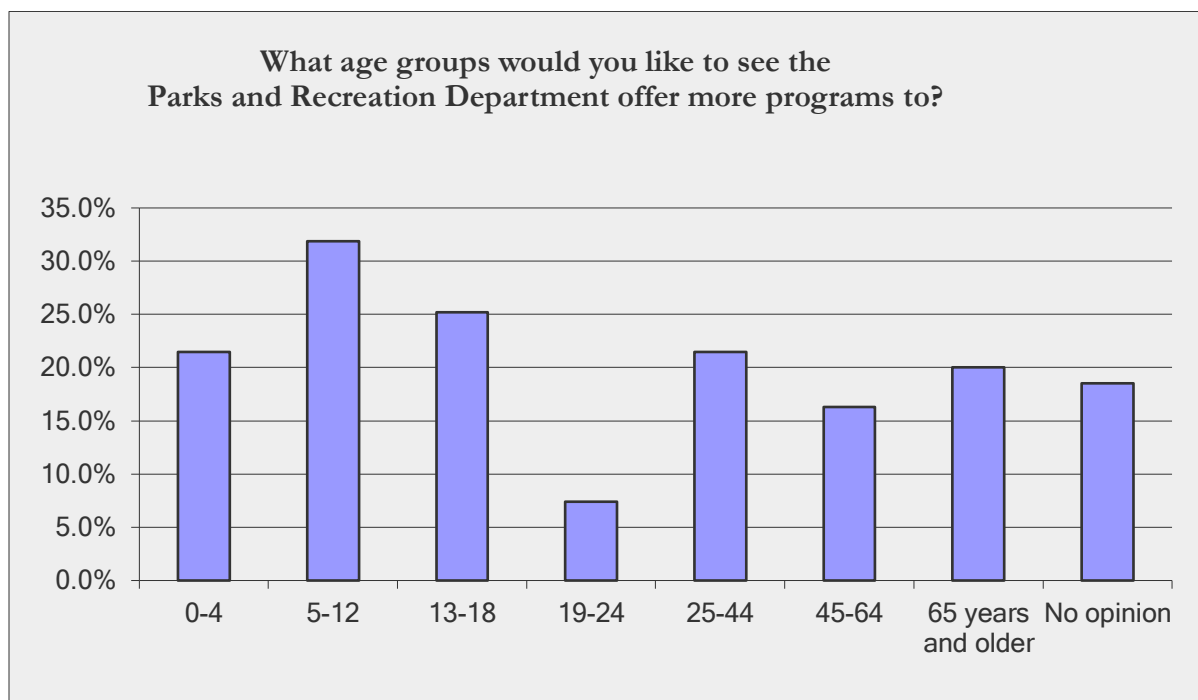
Would you support annually setting aside funds in a Capital Reserve Fund for the purpose of funding replacement and/or maintenance of higher priced items not normally included in the annual operating budget, such as maintenance vehicles/equipment, tennis court resurfacing, playground equipment, parking lot paving, roof replacement, HVAC Systems, etc.?		
Answer Options	Response Percent	Response Count
Yes	88.3%	113
No	11.7%	15
<i>answered question</i>		128
<i>skipped question</i>		13
Comments Welcome		
a reasonable amount		
ABSOLUTELY!		
Always a good idea if possible.		
For the betterment of the community.		
Have to Think about it!		

In these economic times the town needs to lower taxes and be focused on meeting the basic needs that government should provide for: Police, fire departments, safety, schools.
it shouldn't have to come down to this, the School system milks enough money out of us. they also use the fields for school sports. there should be enough funds to do improvements and maintenance with both parties working together. to achieve the same goal. but all of this will end if you don't help keep the youth programs going.
Keeping things looking nice and working properly increases the appeal of our town and could have a positive effect on the monetary value of real estate.
Maybe. Depends on the budgetary needs of the town at the time.
new playground at Prescott Park! and an the bathrooms needs to be the done!
Not a resident
not a resident though
Not Meredith voters so we don't want to comment.
Pay a LOT in taxes already! Maybe more could go to community support such as parks and Rec in interest of our Meredith community and full-time residents
Should be a fund raising event.
These are necessary budget items and should be included in the operating budget, much like car maintenance is included in a household budget. It isn't a surprise that things wear out, need replacing or repair.
These non-critical services are not government's place in my opinion. They are great to have, but only when they are fully user-funded.
This is a no-brainer!! Things wear out!! Let's stay on top of things!
We definitely need transportation for people who can not drive or walk to the center. It makes sense to reserve funds for future repairs rather than try to pay all at the same time.
Why wouldn't these items already been included in the budget?

<b>What is the single most important issue or need concerning Parks and Recreation Department Facilities?</b>
A wider offering of classes and workshops at the Community center - like archery classes, CPR, first aid, adult workout classes (like what has started with Meagan Anderson), art classes
Access to activities during the weekend.
Accessable bathrooms, and water fountains. Not all of the parks have these.
Area for children to go.
As the demographics of our region continue to change, I think the Parks and Rec department needs to keep in mind offering programs relevant to all ages.
Attention to beaches as we tend to drive a distance to use private or state beaches.
Beach improvement
Better marketing to keep in the black
Better programs for seniors.
bringing bathrooms up to par. Offering the ability to pay with a credit card.
Building conditions at PP
Condition of the sports fields. there horrible at times.
Don't know.

Evening hours for use of the meeting rooms are not long enough.
fair access
Funding
Getting information on services out
Have the skate park open more hours.
Having enough staff to provide a safe environment for children a variety of ages.
I think developing a parking facility for the Upper Prescott Park fields and tennis courts is the single most important issue and need that should be addressed.
I think the biggest issue is trying to work within the constraints of the budget; adding to the budget would allow for improved facilities and expansion of programming
Integration of programs with neighboring towns such as HOLDERNESS.
It costs too much out of our taxes. RE taxes are way too high in Meredith, and this is driving away young working families that would otherwise help the economy thrive.
Kids
Leavitt Beach facelift!!
Maintaining our current facilities for all families and residents of Meredith to enjoy
Maintenace
making sure facilities are kept up to date and clean
More options/opportunities for activities that double as childcare
No input at this time
None
Not enough options for residents
not enough time set aside for community members to use the center. Programs take up most of the facilities
not sure
Not sure, guess I should subscribe to the Meredith Paper so I can read people's opinions. Too new here and haven't spent enough time at this very nice Community Center.
Offering more things to do for adults at the community center.
Offering seniors more activities.
Open access to residents, which you have done a wonderful job with!
Open skatepark
Open-Ended Response
Organized sports/activities
outdoor pickleball
paved parking, better bathrooms and playground & the skate park
Programs to meet the needs of the community.
Providing no/low cost activities for pre-teens and teens.
Rejuvenate the lower field to potentially draw more people to use the facilities.
safety
Sports activites after school
The bouncy house back!
The children... helping them feel that they have a safe warm places just incase "somewhere" else isn't. Have funds available to help foster families with activity expenses.

The playground at Prescott park and skate park
The senior center needs to operate
There should be more options for open gym time especially on the weekends.
They need to be better taken care of and more inviting
Updated restrooms at lower Prescott park and leavitt beach
Upkeep and repair of the MCC
Utilizing all the facilities - so perhaps promoting them more or creating activities that will promote the use of them more.
Watch the kids so they don't get hurt.
Waukegan Beach is widely used in the summer, particularly because swim lesson are provided there. The beach could use some maintenance, as sand is very rocky, no eating area etc
Yea! for a survey (after ? years of the Community Center coming on board) and development of the Master Plan. I hope it results in a shared common vision of what a positive P & R Dept. and Community Center can be and offer to ALL.



<b>Comments:</b>
Again, for a 4 year old and 9 month old, programs currently being offered are fitting our needs.
Are there volunteer opportunities?
At this point, both of my children (age 4 and 8) have been able to participate in activities provided by Parks and Recreation Department.
Especially during school vacations ( for the youngsters)!!
First Aid classes and CPR for all ages. Wilderness first aid class for teens and adults. Friday night drop in service or Drop-in for Valentines or other special evenings so parents can go out and pay a fee to have their kids hang out and do activities at the community center.

I don't know the local politics of how the Sr. Ctr. was basically ousted from the Community Center. That was a major reason for me supporting the facility & a huge disappointment.
I think we go a little overboard with programs -- we should be downsizing.
I would like for there to be more activities for young kids (besides that at the library). In addition, it would be nice if there was an adult summer co-ed softball league to play in.
I would LOVE a workout type program for moms with young children where the children can come in strollers. Mainly outdoors in the summer. I would also like to see more organized activities for 3 year olds such as a soccer program, basketball program, etc. I know these don't begin until age 4 and my 3 1/2 year old (4 in December) is more than ready! ☺
I'm an active retiree who wants to stay fit. I need more than pickle ball offered as an ongoing activity.
I'm sure we have wished for more programs as our children where growing. We are all currently at ages where extra programs wouldn't fit into our schedules.
It was sad to see the Meredith Senior Center close, though I understand that it wasn't being used enough to justify the costs.
It would be great to see more organized mommy/child activities for age 0-4 (other than playgroup). In addition, please consider aligning camp age restrictions with school age cut offs. For example, a child can enter kindergarten at age 4, but is unable to participate in summer camp offerings leading up to kindergarten because they have yet to turn 5.
More dances.
More like 19-35
My kids enjoy what they use and enjoy the programs offered. As parents, we do not use the facility.
Older age groups for basketball, volleyball, open gym. This should attract additional interest in using the gym. It is difficult for 30-40 yr olds to be competitive with 18-25 year olds.
outdoor pickleball; badminton;
Paint and sip parties
parks & recs always have done an awesome job in town. My sons were both very active when younger...many family members use the facilities now and the many sports fields.
Revitalizing the 65+ activities is a critical strategy
Teen programs should be implemented
We need to find a way for the after school program and teens to share the facility. I hated sending kids out when I worked there. A community center should be for all
We walk. We sit and talk. We have a move one time per month. An exercise class. Never offer any activities or trips.
You offer great programs for many ages!

**What new programs would you like to see offered by the Parks and Recreation Department? Please be as specific as you can. Example: Summer Lacrosse Camp for girls in grades 7 - 12.**

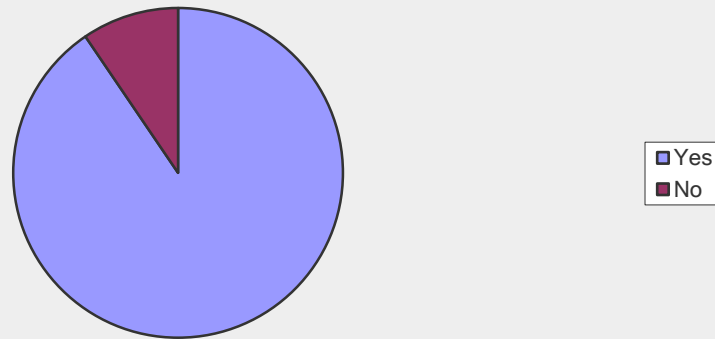
Technology programs for youths. - Summer running events at the track, e.g. weekly 1-mile fun runs (also a great way to identify talent for future XC, track, and ski teams) - Connect with the Conservation Commission to offer guided nature hikes
A couple or up to 4 Bocce courts would be wonderful! Perhaps card leagues such as cribbage, bridge, etc
A new adult co-ed softball league
After school activities and summer camps that are more than daycare. Volunteer opportunities.
After school elementary tutoring program.
Any kind of yoga class
archery shooting sports Aviation courses BeachBody related workout classes
Basketball after school
basketball for girls ages 24-40.
Basketball free time for children between 12-15 years old so parent does not need to attend.
Child Activity Nights (drop off for a 2-3 hour window) Child / Tween Yoga Cooking Classes -- for various age ranges
Childrens Cooking Class
Cooking classes for kids 6-18 during the colder months.
Exercise classes for adults, more sports trips (such as the red Sox game),
Family nights during the week and use of the gym. Arts and crafts programs for ages 4-10 Music and movement for toddlers Yoga classes for ages 30 +
Free play groups
Gymnastics camp, dance camp, karate camp, as examples for new activities to offer children a variety of ages. As alternatives for people who can't do these activities through private businesses. Even small programs that last 4-6 weeks, especially during winter months.
Homework club for middle tier grades. Science and tech based programs for middle tier grades.
I do not feel that it is the role of government to provide programs.
I was happy to see tennnis lessons offered, not sure there are soccer camps.
I would like to see the youth programs coordinated better with those in the neighboring towns/areas (ie Pemi-Baker). Either advertising more for participants or having leagues compete with eachother.
It would be wonderful if you offered exercise classes for adults (e.g. Beach Body / Les Mills classes) several times a week.
knitting group in arts room
LACROSSE CAMP (bother boys and girls) U9 up to U18
Line Dancing Senior Meals Senior Trips
Mental Health First Aid Class
Mom and me exercise classes or children's yoga
More active programs for older citizens-card games, pool, chess, scrabble, trips, etc.
More Coed adult activities

more or different adult programming
More programs altogether for the 5-12 age range. I was told there would be tennis lessons for this age range this summer and haven't heard/seen any information on them, so I am assuming they didn't happen. If there is an Arts and Crafts room, maybe an arts and crafts camp or after school activity would be great. How about skating lessons in the winter utilizing the skating rinks that are rarely used?
More programs for adults, retirees, aging seniors.
More senior activities.
More specific summer programs - similar to the offering of soccer camp this year Increase the strength of the soccer program for the younger kids - similar to what Laconia Youth soccer has done
More tennis and baseball.
Music program for all ages.
None at this time
One off cooking or crafts type of program for adults
Open-Ended Response
Our neighbors in Moultonboro offer 4 different adult fitness classes(see their website). This has been a great disappointment to me. I started in the yoga class in 2010(?), but then it disappeared or was ousted. It's cost was minimal & attracted a LARGE group.
Program offered for teens who are too old for camp. Example: Outdoor teen Adventures.
Softball for girls
Something social for working adults- an evening gathering for knitting or other special interests. Almost everything in Meredith is geared toward stay at home moms, retirees or the wealthy.
Summer Lacrosse
summer lacrosse camp for all ages, after school lacrosse camp
Summer Lacrosse Camp for boys and girls in grades ages 5-14. Summer Basketball camp for ages 5-14
Summer or Fall Lacrosse camp grades 1-8. Music Lessons or Community Center Band.all ages Stain glass workshop for ages 10+
summer pick up basketball for women 19 - 99
Summer specialty camps that offer an alternative to the current program. For example, adventure programs with smaller groups (and understandably higher costs). Each day would involve a new activity, canoe/kayak, hike, community service, climbing wall, outdoor first aid, birding trips, science exploration. Art camp, again a smaller group with individual and community art projects. See also above for more ideas.
Summer tennis lessons for children & adults
Tackle football program like in Gilford
Tai Chi and seated yoga.
Tball for age 3
tennis league for kids and adults
Tennis lessons, all ages
Volleyball for girls of all ages
Vollyball boys 12 girls 8

Walking group later in day.
Yoga, exercise classes of some sort for all abilities
Yoga, zumba, cardio, core fitness, badminton, tech classes, trips to festivals, special events, etc.
Zumba classes or cardio classes for all ages. Pay by the class or 6 week session, etc.

**Do you feel that current fees for Parks and Recreation services are reasonable?**

Answer Options	Response Percent	Response Count
Yes	90.5%	114
No	9.5%	12
<i>answered question</i>		<b>126</b>
<i>skipped question</i>		<b>15</b>



**Comments:**

Don't know

I am a non resident and my child attends programs all year long and I understand that non resident fees are higher as Meredith residents have taxes taken out and I don't but some programs seemed quite a bit higher. Summer camp is \$100 for a resident and \$150 for a non resident for 1 child for 1 week and the after school program is \$35 for a resident and \$50 for a non resident so the \$50 jump for summer seems a bit steeper. With that said, my son enjoys the programs there and it works well for us, just sharing a thought/comment.

I believe the fees are more than reasonable, I'd even call them cheap, but also the value we receive for those fees differs. Ex: the spring t-ball program was inexpensive but I felt like the program was pretty mediocre and my kid didn't get much out of it. So I felt like I got what I paid for. However, with the summer swimming program, I was astounded at the value my child got out of that. \$60 for a 6 week (maybe more, I can't remember) swimming program that taught my daughter so much, was done so professionally and with such great quality instruction, now that was worth every penny and I honestly probably would have paid more. I bragged all summer to my friends from other areas about the quality of the program, the results, and how inexpensive it was.

I have met a few families that could not send their children to the summer camp due to price; Families otherwise with enough money.
I know alot of funding has been lost but other towns Gilford & Laconia that I know of offer so many more activities programs for the elderly at low or no cost. being a widow I am on a fixed income. I would use the facilitiy alot more just to be more involved with the community.
I think it limits the use of the building.
I think the cost asked is reasonable. For the price I pay, my child gets a team shirt, use of the facilities, the coaches time, as well as everything else that is offered and provided with each program.
i think you should make do with you get out of the tax base it's so pose to help working parents in the summer and after school. no one should have to feel like there kids cant join because its expensive. nor should a working parent have to ask for assistance if you live in this town and you pay taxes in this town then it should be free as far as i'm concerned. if u live out of town or you rent, pay up! as far as the elderly you need to do more in the day for them it wasn't just meant for kids.
I wish for residents it would be a little less than regular town daycares.
In Moultonboro it's cheaper. You get uniforms and the coaches are trained. The leagues and games are much more organized.
Lifeguards at all beaches??
Not high enough to self-support. So, for example, I often feel like I am subsidizing the cheap day care programs for people who are not even working and don't need day care anyway. We were pretty poor when our kids were young, but we bore the responsibility to watch them or arrange for family to do so when we worked.
services should be free for the taxpayers of Meredith
Since I am not familiar with other fees, I can only comment on Senior fees. I do think they are reasonable.
The only thing I pay for is exercise class.
The summer program is expensive for the activities provided. It also doesn't appeal to older kids.
There should be free open gym times in the gymnasium for residents to use
Though the present stretch class being offered seems pricey for seniors fixed incomes.
Very! Thank you!
Youth volleyball, grades 3-6

<b>What is the single most important issue or concern that you have in the area of recreation programming?</b>
A safe, friendly environment for children.
ability to reach all ages in town with relevant programming
Budget!
child care during non school hours
Clean parks
Don't have one.
don't know enough about it.
Efficient use of resources.

Funding. I don't know much about Meredith town politics, but I am sure the parks and rec budget is often on the chopping block. I want to make sure parks and rec program is properly funded to continue to provide programming for people of all ages and good quality facilities.
Having longer term programs. Not less than 8 weeks.
How about an open Mic coffee house once a month? Check out Andover, NH
I don't want to see Meredith offer too many things that a government is not supposed to be offering, and drive the taxes up on the tax payers so that the non-taxpayers get more cheap services.
I enjoy walking around Prescott Park by the soccer field but to be frank lately security is a concern to me as I walk alone.
Keeping sex offenders away
Keeping up with current trends and keeping tweens and teenagers engaged.
Lack of programs geared specifically for 30 to 40 somethings (basketball, volleyball, tennis, etc)
Marketing and staffing (more)
More for young kids (0-4)
More hours at skate park. Bring back street dance and family fun night. More music.
More options/lessons, etc for all ages
More staff seems to be needed
My only concern is with the after school program. As a mother to a son in Kindergarten, I am not comfortable sending him there, though we have the need. My concern is that children are not divided up by age in any way, and combining 5 and 6 year olds with older students does not make me comfortable.
Not enough thought given to the older population who do help support the center.
Not government's role.
Not having enough volunteer coaches so all children willing can participate. Or having teams too big for children to get a good experience.
Offering more activities for adults.
Older age groups don't have a lot of things to participate in.
Perhaps open on Sundays??
Professionalism and organization
Programs for seniors
Providing safe and healthy activities for youth that they WANT to do.
Quality coaching.
Senior Activities.
Senior center
Since we are currently not using the programming. I would hope there is funding for children who would like to participate in programs who may not be able to afford to do so.
Staffing. Having quality supervision for students taking advantage of the programs/facilities available.
Supervision
The recreation department should continue to offer active options for people in Meredith.
There are no resources for low income families to pay for sports and recreation programs, other than being embarrassed and going to the welfare office.

To be honest, as the recreation department is set up now I prefer the library recreational offerings for adults because the programs are more educational
Using the Comm.Ctr. for all age groups; the concept of child/day care seems to have a monopoly.

<b>Please share any thoughts you have on topics relating to Meredith Parks and Recreation not covered on this survey.</b>
How about a drop in center where groups could gather and play bocce ball, badminton, put a jigsaw puzzle together, work on a project together, play cards,etc.
I am an active senior & a tennis player as my comments indicate. I will let others from different demographics advocate for their interests, as I cannot speak for them.
I am appreciative of the attitude and cooperation provided to the high school for our events. Thank you so much for a clean and welcoming space.
I don't have any major concerns, the community center and associated programs are generally run very well. The staff takes feedback well and makes changes as needed.
I never would have looked at the web site. I first learned of Strength and Balance in Meredith News. Without that article, I never would have inquired about programs.
I thank all those who volunteer/work/help out with each and every program ... I'm sure it can feel like a thankless job at times. We don't always take advantage of the programs (camps, etc), but I think it is so important to have these options available for families! Thank you!!!
I think you guys do a fantastic job.
I would like to see the quality of the afterschool program improved. Through observation and word or mouth, I am not 100% comfortable having my kids attend even though I would love them to!
I would love a pool for winter use especially but know it is a reach and probably not cost effective. I think an additional gym space could be used by both the school and town. Both current gyms are small.
It's hard to find activities and groups on the websites. Trying to find information on when adult leagues is difficult.
Just want to say again how impressed I was with the summer swim program. My daughter learned so much, it was amazing to watch over the course of the summer how she became more and more comfortable in the water, going under, floating, "swimming" (almost!). I would highly recommend the program and look forward to having her participate again next summer. She always talked about her teacher Emily and how much she liked her.
Keep teaching the importance of respect, manners and sportsmanship!
lights at turf filed at Inter-Lakes High new Town of Meredith website
Staff Rock!
Thank you for asking :)
Thank you so much for making the program so strong and inclusive! It has come a long way since the lower Prescott fields day camp that ran from 9-12 outside. We enjoyed the indoor family movies a few summers ago. I appreciate all of your efforts!
Thank you to the entire Parks and Rec Department!
Thanks for reaching out with a survey.

The CC is the best thing the Town has ever built. More funding in the near future will bring more revenue in the long run.
The residents of Meredith pay taxes for our community center and should not have to pay for Inter-Lakes high school students to use the center in any capacity, including the Scholarship Dinner.
The swim lessons are amazing!
Waukegan Community Highlands Park - Trails: I live across the street from the entrance of this park which has a gate but it isn't used. People park in there at night well after the posted hours.
We love what you do and offer to our community!

### Inter-Lakes School District Student Survey Summary

What recreational facilities would you like to see added to Meredith?			
FACILITIES	GRADES 3-8	GRADES 9-12	TOTALS
Indoor Swimming Pool	74	16	90
Indoor Ice Skating	66	10	76
Trampoline Park	61	7	68
Outdoor Volleyball Court	12	3	15
Workout Facility	10	5	15
Indoor Synthetic Turf Facility	4	8	12
XC Running Trails	8	2	10
Upgrade Skate Park	4	5	9
Dirt Bike Track	6	2	8
Bike Path	7	1	8
Expand Skate Park Hours	4	4	8
Lights on Turf Field	8	0	8
Dog Park	5	2	7
Water Park	4	0	4
Upgrade Prescott Park	3	1	4
Zip Line Park	4	0	4
Arcade/Gaming	4	0	4
Ropes Course	4	0	4
Concessions at Prescott Park	4	0	4
Teen Lounge	2	2	4
Archery Range	3	0	3
Art Studio	3	0	3
Food Court at Community Center	3	0	3
New Scoreboards at Prescott Park	3	0	3

upgrade Prescott Park Restrooms	3	0	3
Stadium Seating at Turf Field	3	0	3
Hiking Trails	2	0	2
Frisbee Golf	2	0	2
Sledding Hill	2	0	2
More Tennis Courts	2	0	2
Community Garden	2	0	2
Motocross Trail	0	2	2
More Lighted Fields at Prescott Park	2	0	2
Computer Lab	2	0	2
Sports History Museum	1	0	1
Bandstand	1	0	1
XC Ski Trails	1	0	1
Workshop: Kids Learn to Build	1	0	1
Indoor Skate Park	1	0	1
Improve Trails from School to Prescott Park	1	0	1
Outdoor Pool	1	0	1

Please share what kinds of programs or activities you would like to see added either at the Community Center or outside in Meredith?			
PROGRAMS	GRADES 3-8	GRADES 9-12	TOTALS
<b>Respondents</b>	<b>221</b>	<b>324</b>	<b>545</b>
Laser Tag	17	4	21
Indoor Soccer	13	2	15
Archery Class	12	2	14
Youth Tackle Football	13	0	13
Gymnastics	10	2	12
Paint Ball	12	0	12
Ice Hockey	11	0	11
Dance Lessons	6	4	10
Art Classes	7	3	10
Music Lessons	8	2	10
Dodge Ball	10	0	10
Lacrosse	6	4	10
Ski/Snowboard Program	9	0	9
Roller-skating	8	1	9
Volleyball	8	0	8

Field Hockey	3	3	6
Yoga	4	2	6
Babysitting Course	5	0	5
Bungee Jumping	5	0	5
Wrestling	4	0	4
Scuba Diving	3	0	3
Horseback Riding	3	0	3
Board Game Night	3	0	3
Lego Program	2	0	2
Model Rocket Program	2	0	2
Dances	2	0	2
Homework Club	2	0	2
Hiking	2	0	2
Kids Cooking	2	0	2
Technology Club	2	0	2
Ice Skating at PSU	2	0	2
Rubrics Competitions	2	0	2
Nerf Gun Competition	2	0	2
Movies	1	1	2
Counselor for Kids Who Need Emotional Support	1	1	2
Swim Team	1	1	2
Gaming Tournament	2	0	2
Ultimate Frisbee	1	1	2
Golf Lessons	1	0	1
Floor Hockey	1	0	1
Pet Training	1	0	1
Glow in the Dark Bowling	0	1	1
Crew	0	1	1
Karate	1	0	1
Indoor Flag Football	1	0	1
Exercise Program	1	0	1
Pokémon Club	1	0	1
Girls Club	1	0	1
Skydiving	1	0	1
Canoe Scavenger Hunt on Lake	1	0	1
Fishing Program	0	1	1
Freestyle	1	0	1
5 K Road Race	1	0	1
Engineering	1	0	1

Wheelchair Accessible Programs	1	0	1
Mat Ball	1	0	1
Acting Class	1	0	1
Drawing Class	1	0	1
Climbing Trees	1	0	1
Music Jam Sessions	1	0	1
Camp Out in the Woods	1	0	1
Lip Synch Competition	1	0	1
Robotics Club	1	0	1
Field Days Event	1	0	1
Minecraft	1	0	1
Eating Contest	1	0	1
Lost Survival Skills Class	1	0	1
Gardening	1	0	1
Boxing	1	0	1
Painting Class	1	0	1
Trip to Boston Theater	1	0	1
Boys Volleyball	5	5	0

## APPROVAL AND ADOPTION OF MASTER PLAN

The Parks and Recreation Department  
 15 Year Master Plan  
 was presented to the  
 Board of Selectmen on July 17, 2017



*Computer Class*

## Monitoring the Master Plan

It is recommended that the Parks and Recreation Director, Town Manager, and Board of Selectmen meet each year on August 1 to monitor the progress of the Master Plan. It is recommended at this meeting that direction be provided to enable the Parks and Recreation Director to formulate the funding requests for both the operating budget and Facility Improvement Expendable Trust Fund for the upcoming year and beyond.

